

KTC Rapeseed Oil 1 x 20L BiB

Rapeseed Oil

PRODUCT DESCRIPTION
Clear liquid oil suitable for culinary purposes. Produced from Non GM oilseed rapeseed.

Manufacturer Product Code	1076
Product Type	Food
Product Category	Cooking Fats, Oils & Vinegars
Storage Type	Ambient
Erudus ID	55d85bc575d845109d61a2f5f2846bbd
Specification Type	Generic

Outer Case GTIN	5013635116959
-----------------	---------------



INGREDIENTS

Ingredient Declaration
Rapeseed Oil, Antifoaming Agent (Dimethyl polysiloxane)

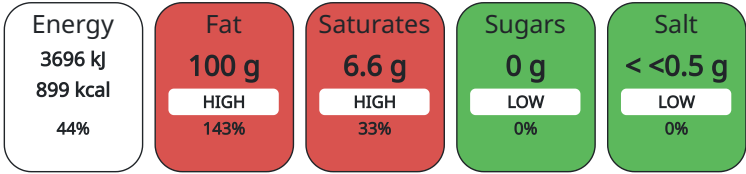
ALLERGENS

<i>Product Contains:</i>	
Celery/Celeriac	No
Cereals Containing Gluten	No
Barley	No
Oats	No
Rye	No
Wheat (including Spelt and Khorasan)	No
Crustacea	No
Eggs	No
Fish	No
Lupin	No
Milk	No
Molluscs	No
Mustard	No
Nuts (Tree)	No
Almond nuts	No
Brazil nuts	No
Cashew nuts	No
Hazelnuts	No
Macadamia (Queensland) nuts	No
Pecan nuts	No
Pistachio nuts	No
Walnuts	No
Peanuts	No
Sesame Seeds	No
Soybeans	No
Sulphur Dioxide and Sulphites	No

DIET SUITABILITY

Vegan Diet	Suitable for
Halal Diet	Suitable for
Vegetarian Diet	Suitable for
Kosher Diet	Suitable for

Each 100g/ml portion contains:



of your reference intake.

Typical values per 100g/ml : Energy 899kcal / 3696kJ

Nutrient	per 100g	RI per 100g
Energy (kJ)	3696 kJ	44%
Energy (kcal)	899 kcal	45%
Fat	99.9 g	143%
of which Saturates	6.6 g	33%
of which Mono-unsaturates	57 g	
of which Polyunsaturates	32 g	
Carbohydrate	0 g	
of which Sugars	0 g	
Fibre	0 g	
Protein	< 0.5 g	1%
Salt	< 0.01 g	0%

HANDLING &
STORAGE
INFORMATION

Directions For Use

Rapeseed Oil is widely used in foodstuffs.

Storage Instructions

Store at ambient temperatures, off the floor in a clean dry area. Keep away from strongly odorous materials and direct sunlight.

ORIGIN

Product Country of OriginUnited Kingdom

Additional Origin Details

Countries of Origin Rapeseed oil : UK Antifoaming agent (E900) - Netherlands *On very rare occasions the seeds may come from: France, Germany, Hungary, Bulgaria, Romania, Slovakia, Serbia, Poland, Czech Republic, Belgium, Latvia, Lithuania, Austria, Australia, Denmark and Uruguay.

Origin of the Primary IngredientUnited Kingdom

CONTACT
INFORMATION

Address

KTC (Edibles) Ltd
Moorcroft Drive
Moorcroft Park
WS10 7DE
Wednesbury
West Midlands
United Kingdom

Marta.Wojciechowska-Thomas@kctfoodgroup.co.uk
+44 (0) 121 505 9200

Technical

Marta Wojciechowska-Thomas
Marta.Wojciechowska-Thomas@kctfoodgroup.co.uk
07831310220
Food Safety Compliance Manager

Commercial

Donna King
donna@kct-edibles.co.uk
01215059248
Sales Admin Manager

Complaints

Technical Team
technical@kct-edibles.co.uk
01215059217
Technical Team

The information on the [Erudus System](#) has been supplied by the manufacturers of the products and, whilst the owners of the Erudus System take steps to ensure the information is regularly updated, they give no warranty and no guarantee that the information is accurate. Product information and ingredients may change, please always read product labels carefully in addition to using the information provided by Erudus.

We do not accept liability for any inaccuracies or incorrect information contained on this site.
Please visit <http://www.erudus.com/terms-and-conditions> for full terms and conditions.