

630100

15"x 9" Cheese & Tomato Slab Pizza (Lower Fat)
(x 6)

Cheese & Tomato Slab Pizza (Lower Fat) 6x

PRODUCT DESCRIPTION

Pizza Slab (Lower Fat)15"x 9" made of Wheat flour,topped with seasoned tomato sauce and a blend of shredded Mozzarella and Cheddar cheeses. Individually flow-wrapped in clear polypropylene.

Brand	Capri Foods Ltd
Manufacturer Product Code	LF526/CFLF526
Product Type	Food
Product Category	Vegetarian
Storage Type	Frozen
Erudus ID	4c64712652f94bacb145c0a7b1a1b39c
Specification Type	Legacy



Outer Case GTIN

05060286060001



INGREDIENTS

Ingredient Declaration
WHEAT Flour (44%) (**WHEAT** Flour, Calcium Carbonate, Iron, Niacin, Thiamin), **CHEESE** (21%)[Mozzarella, Cheddar](**MILK**), Water,Tomato Sauce (16%) [Water, Tomato Powder, Stabilizer: Modified Potato Starch, Sugar, Salt, Dried Oregano, Garlic Powder, Onion Powder, Colour: Paprika Extract, Rapeseed Oil], Pre-mix [**WHEAT** Flour (**WHEAT** Flour, Calcium Carbonate, Niacin, Iron, Thiamine), Sugar, Potassium Chloride, Salt, Emulsifier: Mono- and Diacetyltartaric Acid Esters of Mono- and Diglycerides of Fatty Acids, Flour Treatment Agent: Ascorbic Acid], Rapeseed Oil, Yeast.

ALLERGENS

Product Contains:

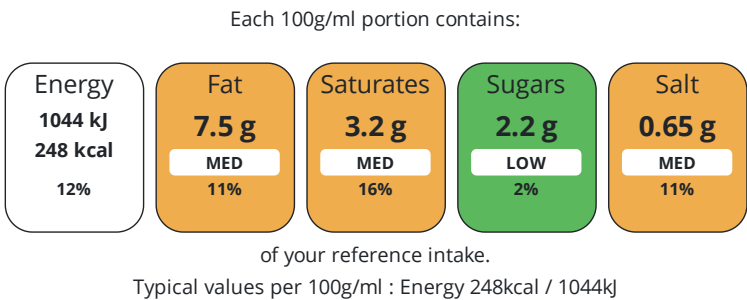
Celery/Celeriac	No
Cereals Containing Gluten	Yes
Barley	No
Oats	No
Rye	No
Wheat (including Spelt and Khorasan)	Yes
Crustacea	No
Eggs	No
Fish	No
Lupin	No
Milk	Yes
Molluscs	No

Mustard	No
Nuts (Tree)	No
Almond nuts	No
Brazil nuts	No
Cashew nuts	No
Hazelnuts	No
Macadamia (Queensland) nuts	No
Pecan nuts	No
Pistachio nuts	No
Walnuts	No
Peanuts	No
Sesame Seeds	No
Soybeans	No
Sulphur Dioxide and Sulphites	No

DIET
SUITABILITY

Suitable for Coeliacs	No	Halal Diet	No
Kosher Diet	No	Vegetarian Diet	Suitable for
Vegan Diet	No		

NUTRITIONAL
INFORMATION



Nutrient	per 100g/ml	RI per 100g/ml	per 101g/ml serving	RI per 101g/ml serving
Energy (kJ)	1044 kJ	12%	1054.4 kJ	13%
Energy (kcal)	248 kcal	12%	250.5 kcal	13%
Fat	7.5 g	11%	7.6 g	11%
of which Saturates	3.2 g	16%	3.2 g	16%
of which Mono-unsaturates	2.5 g		2.5 g	
of which Polyunsaturates	1 g		1 g	
Carbohydrate	34.7 g	13%	35 g	13%
of which Sugars	2.2 g	2%	2.2 g	2%
Fibre	1.5 g		1.5 g	
Protein	9.7 g	19%	9.8 g	20%
Salt	0.65 g	11%	0.7 g	12%
Sodium	257 mg		259.6 mg	
Serving Size	101 g			

HANDLING &
STORAGE
INFORMATION

Directions For Use	From Frozen: Remove all packaging, place directly on a baking tray and cook the product at 180°C / 350°F / Gas Mark 4, in a preheated oven for 13 to 15 minutes. Ensure the product is piping hot before serving.
Storage Instructions	Keep frozen between -18°C and -25°C. Do not refreeze once thawed.

ORIGIN

Product Country of Origin	United Kingdom
---------------------------	----------------

CONTACT
INFORMATION

Additional Origin Details	
0 Address	Technical Contact
Capri Foods Ltd	Raju Ramachandran
Unit 21, Worton Hall Industrial Estate	Q A Manager
Worton Road	Raju@caprifoods.co.uk
Isleworth	
Middlesex	P: (Phone) 02087582561
TW7 6ER	
United Kingdom	
P: (Phone) 0208 758 2561	

The information on the [Erudus System](#) has been supplied by the manufacturers of the products and, whilst the owners of the Erudus System take steps to ensure the information is regularly updated, they give no warranty and no guarantee that the information is accurate. Product information and ingredients may change, please always read product labels carefully in addition to using the information provided by Erudus.

We do not accept liability for any inaccuracies or incorrect information contained on this site.
Please visit <http://www.erudus.com/terms-and-conditions> for full terms and conditions.