

Mini Chocolate Cup Selection (1 x 48)

Mini Chocolate Cup Selection (1 X 48)

PRODUCT DESCRIPTION

Selection of defrost and serve mini dark chocolate cups, with smooth, creamy dessert inspired fillings; 12 of each flavour: * Tiramisu * Lemon cheesecake * Banoffee pie * Raspberry panna cotta Packed 4 x 12. Suitable for vegetarians. (1 x 48)

Brand	Central Foods Group Limited
Manufacturer Product Code	FDCAN116
Product Type	Food
Product Category	Desserts
Storage Type	Frozen
Erudus ID	00fa2a6fe88447a59cf5f904e68e69d3
Specification Type	Legacy



Outer Case GTIN

5060089683827



INGREDIENTS

Ingredient Declaration

Chocolate Cups (32%) (Sugar, Cocoa Mass, Cocoa Butter, Vanilla, Emulsifier (**SOYA** Lecithin)).

Tiramisu (Cream Cheese (**MILK**), Double Cream (**MILK**), Caster Sugar, Water, Sherry, Coffee Granules, Cocoa Powder).

Lemon Cheesecake (Cream Cheese (**MILK**), Double Cream (**MILK**), Lemon Curd (5%) (Sugar, Glucose Syrup, Water, Vegetable Oil (Palm Oil, Rapeseed Oil), **WHEAT** Starch, Pasteurised Whole **EGG** Powder, Maize Starch, Gelling Agent (Pectin), Acidity Regulators (Citric Acid, Trisodium Citrate), Natural Lemon Flavour, Salt, Acidity Regulator (Acetic Acid), Colour (Curcumin)), Digestive Biscuit Crumb (**WHEAT** Flour, Palm Oil, Rapeseed Oil, Sugar, Invert Sugar Syrup, Raising Agent (Sodium Bicarbonate), Salt)).

Raspberry Panna Cotta (Cream Cheese (**MILK**), Double Cream (**MILK**), Raspberries (3%), Caster Sugar, Water, Modified Maize Starch, Antioxidant (Citric Acid)).

Banoffee Pie (Caramel (7%) (Glucose Syrup, Sweetened Condensed **MILK** (Skimmed **MILK**, Sugar), Vegetable Fat (Coconut), Emulsifier (Mono- and Di-Glycerides of Fatty Acids), Salt, Natural Flavourings), Banana Puree (4%) (Banana Puree, Sugar, Acidity Regulator (Citric Acid), Antioxidant (Ascorbic Acid)), Double Cream (**MILK**), Caster Sugar, Dark Chocolate (Cocoa Mass, Sugar, Cocoa Butter, **SOYA** Lecithin, Natural Vanilla)).

ALLERGENS

Product Contains:

Celery/Celeriac	No
Cereals Containing Gluten	Yes
Barley	No
Oats	No
Rye	No
Wheat (including Spelt and Khorasan)	Yes
Gluten content <20ppm	No
Crustacea	No
Eggs	Yes
Fish	No
Lupin	No
Milk	Yes
Molluscs	No

Mustard	No
Nuts (Tree)	No
Almond nuts	No
Brazil nuts	No
Cashew nuts	No
Hazelnuts	No
Macadamia (Queensland) nuts	No
Pecan nuts	No
Pistachio nuts	No
Walnuts	No
Peanuts	No
Sesame Seeds	No
Soybeans	Yes
Sulphur Dioxide and Sulphites	No

Additional Allergen Information

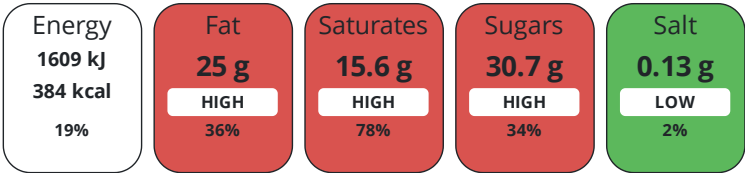
For allergens, including cereals containing gluten, see ingredients in CAPITALS.

DIET
SUITABILITY

Suitable for Coeliacs	No	Halal Diet	No
Kosher Diet	No	Vegetarian Diet	Suitable for
Vegan Diet	No		

NUTRITIONAL
INFORMATION

Each 100g/ml portion contains:



of your reference intake.

Typical values per 100g/ml : Energy 384kcal / 1609kJ

Nutrient	per 100g/ml	RI per 100g/ml	per 18.5g/ml serving	RI per 18.5g/ml serving
Energy (kJ)	1609 kJ	19%	297.7 kJ	4%
Energy (kcal)	384 kcal	19%	71 kcal	4%
Fat	25 g	36%	4.6 g	7%
of which Saturates	15.6 g	78%	2.9 g	15%
Carbohydrate	34.9 g	13%	6.5 g	3%
of which Sugars	30.7 g	34%	5.7 g	6%
Fibre	2.7 g		0.5 g	
Protein	3.7 g	7%	0.7 g	1%
Salt	0.13 g	2%	-	
Sodium	50 mg		9.3 mg	
Serving Size	18.5 g			

HANDLING &
STORAGE
INFORMATION

Directions For Use

From Frozen unless otherwise stated Thaw and Serve: remove all packaging and place on a serving plate. Allow to thaw in a refrigerator for approximately 1 hour. Once defrosted keep refrigerated and use within 24 hours.

Storage Instructions

Keep Frozen. Store at -18°C or below

ORIGIN

Product Country of Origin United Kingdom

Additional Origin Details

CONTACT
INFORMATION

United Kingdom

Address

Central Foods Group Limited

Maple Court

Ash Lane

Collingtree

Northamptonshire

NN4 0NB

England

P: (Phone) 01604 858 522

Complaints Contact

Karen Wright

Customer Care Admin Assistant

kwright@centralfoods.co.uk

P: (Phone) 01604 878 299

Technical Contact

Chris Stobart

Technical Manager

technical@centralfoods.co.uk

P: (Phone) 01604 878 276

Commercial Contact

Oliver Sampson

Managing Director

osampson@centralfoods.co.uk

P: (Phone) 07715 073 273

The information on the [Erudus System](#) has been supplied by the manufacturers of the products and, whilst the owners of the Erudus System take steps to ensure the information is regularly updated, they give no warranty and no guarantee that the information is accurate. Product information and ingredients may change, please always read product labels carefully in addition to using the information provided by Erudus.

We do not accept liability for any inaccuracies or incorrect information contained on this site.
Please visit <http://www.erudus.com/terms-and-conditions> for full terms and conditions.