

970087

# CH020 Breaded Chicken Steak (60g) Red Tractor

Breaded Chicken Steak 2x2.4kg

PRODUCT DESCRIPTION

Breaded Red Tractor Chicken Steaks. Chopped and shaped, formed chicken in a crispy breadcrumb coating. Approximately 80 portions per case. Please note that if we do not receive a response or feedback regarding this specification within 10 days from the date of receipt, the specification will be considered approved.

Brand	The UK Foodhall Ltd
Manufacturer Product Code	CH020
Product Type	Food
Product Category	Chicken & Turkey
Storage Type	Frozen
Erudus ID	db328e1d3c7c4a8c996f4703bb7b3b61
Specification Type	Meat
Outer Case GTIN	5060329042629



INGREDIENTS

**Ingredient Declaration**  
Chicken (56%), **Wheat** Flour (**Wheat** Flour, Calcium Carbonate, Iron, Niacin, Thiamin), Water, Durum **Wheat** Semolina, Rice Flour, **Wheat** Starch, **Wheat** Gluten, Rapeseed Oil, Salt, Yeast, Dextrose, Pea Fibre, Stabiliser (Triphosphates), Onion Powder, Sugar, Yeast Extract, Garlic Powder, White Pepper, Sage.

ALLERGENS

Product Contains:

Celery/Celeriac	No
Cereals Containing Gluten	Yes
Barley	No
Oats	No
Rye	No
Wheat (including Spelt and Khorasan)	Yes
Crustacea	No
Eggs	No
Fish	No
Lupin	No
Milk	No
Molluscs	No

Mustard	No
Nuts (Tree)	No
Almond nuts	No
Brazil nuts	No
Cashew nuts	No
Hazelnuts	No
Macadamia (Queensland) nuts	No
Pecan nuts	No
Pistachio nuts	No
Walnuts	No
Peanuts	No
Sesame Seeds	No
Soybeans	No
Sulphur Dioxide and Sulphites	No

**Additional Allergen Information**  
Product contains WHEAT.

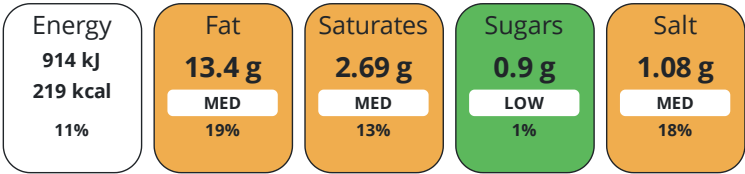
DIET  
SUITABILITY

Halal Diet	No
------------	----

Kosher Diet	No
-------------	----

NUTRITIONAL  
INFORMATION

Each 100g/ml portion contains:



of your reference intake.

Typical values per 100g/ml : Energy 219kcal / 914kJ

Nutrient	per 100g	RI per 100g	per 60g serving	RI per 60g serving
Energy (kJ)	914 kJ	11%	548.4 kJ	7%
Energy (kcal)	219 kcal	11%	131.4 kcal	7%
Fat	13.4 g	19%	8 g	11%
of which Saturates	2.69 g	13%	1.6 g	8%
Carbohydrate	12.1 g	5%	7.3 g	3%
of which Sugars	0.9 g	1%	0.5 g	1%
Fibre	2.4 g		1.4 g	
Protein	11.5 g	23%	6.9 g	14%
Salt	1.08 g	18%	0.6 g	10%
Serving Size	60 g			

HANDLING &  
STORAGE  
INFORMATION

**Directions For Use**  
All Appliances vary. These are guidelines only. Place in a preheated oven at 220°C/Gas Mark 6 for 20-25 minutes. Check food is piping hot throughout before serving >75°C. Do not reheat.

**Storage Instructions**  
Store frozen at < -18°C.

ORIGIN

**Product Country of Origin** United Kingdom

**Additional Origin Details**  
Made in the UK with Red Tractor Assured Chicken.

**Origin of the Primary Ingredient**

SAFETY &  
WARNINGS  
CONTACT  
INFORMATION

Address	Technical Contact
The UK Foodhall Ltd	Nicola Frankham
2 Darwin Court	Technical Manager
Oxon Business Park	technical@karenmcquade.com
Shrewsbury	
Shropshire	P: (Phone) 0345-3011182
SY3 5AL	
England	
P: (Phone) 0845 3011182	
Complaints Contact	Commercial Contact
wemayhaveaproblem@karenmcquade.com	Shaun Mancrief
	Commercial Director
P: (Phone) 0345-3011182	supplychain@karenmcquade.com
	P: (Phone) 03453011182

The information on the [Erudus System](#) has been supplied by the manufacturers of the products and, whilst the owners of the Erudus System take steps to ensure the information is regularly updated, they give no warranty and no guarantee that the information is accurate. Product information and ingredients may change, please always read product labels carefully in addition to using the information provided by Erudus.

We do not accept liability for any inaccuracies or incorrect information contained on this site.  
Please visit <http://www.erudus.com/terms-and-conditions> for full terms and conditions.