

Black Cherry & Almond Flavoured Tray Bake

Black Cherry & Almond Flavoured Tray Bake

PRODUCT DESCRIPTION

An almond infused sponge decoratively marbled with an indulgent black cherry fruit filling, finished with glace cherries.

Brand	Love Handmade Cakes (Exquisite Handmade Cakes)
Manufacturer Product Code	TBCHAF
Product Type	Food
Product Category	Bakery - General
Storage Type	Frozen
Erudus ID	ffcc445fb2f3404bb6943d067d9a333a
Specification Type	Legacy

Outer Case GTIN5060158956906



INGREDIENTS

Ingredient Declaration

Wheat Flour (**WHEAT** Flour, Calcium Carbonate, Iron, Niacin, Thiamine), Margarine (Palm Fat, Rapeseed Oil, Water, Salt, Emulsifier (E475), Flavouring, Colours (E160b(i), E100)), Dark Cherry Filling (19%) (Black Cherries (38%), Water, Sugar, Modified Waxy Maize Starch, Acidity Regulator (E330), Natural Flavouring, Preservative (E202)), Sugar, Pasteurised Liquid Whole **EGG**, Glace Cherries (2%) (Cherries (84%), Glucose Fructose Syrup, Anti-Oxidant (E330), Colour (E163), Preservative (**SULPHUR DIOXIDE**)), Humectant (Vegetable Glycerine), Rapeseed Oil (Rapeseed Oil, Anti-Foaming Agent (E900)), Modified Maize Starch, Whey Powder (**MILK**), Sugar Dusting (Dextrose, Sugar, Cornflour, Palm Oil), Flavouring, Baking Powder (Raising Agents (E450, E500), Wheat Flour (**WHEAT** Flour, Calcium Carbonate, Iron, Niacin, Thiamine)), Raising Agents (E450, E500, E341), Emulsifiers (E477, E471, E481), **WHEAT** Gluten, Natural Flavouring, Preservative (E202)

ALLERGENS

Product Contains:

Celery/Celeriac	No
Cereals Containing Gluten	Yes
Barley	May Contain
Oats	May Contain
Rye	No
Wheat (including Spelt and Khorasan)	Yes
Gluten content <20ppm	No
Crustacea	No
Eggs	Yes
Fish	No
Lupin	No
Milk	Yes
Molluscs	No

Mustard	No
Nuts (Tree)	May Contain
Almond nuts	May Contain
Brazil nuts	No
Cashew nuts	No
Hazelnuts	May Contain
Macadamia (Queensland) nuts	No
Pecan nuts	May Contain
Pistachio nuts	May Contain
Walnuts	May Contain
Peanuts	May Contain
Sesame Seeds	No
Soybeans	May Contain
Sulphur Dioxide and Sulphites	No

Risk Source:

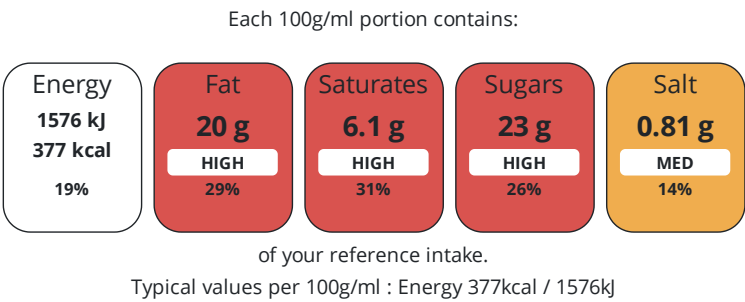
Additional Allergen Information

May contain peanuts, nuts, soya and other gluten sources (barley, oat) due to manufacturing methods. May contain cherry stone fragments.

DIET
SUITABILITY

Suitable for Coeliacs	No	Halal Diet	No
Kosher Diet	No	Vegetarian Diet	Suitable for
Vegan Diet	No		

NUTRITIONAL
INFORMATION



Nutrient	per 100g/ml	RI per 100g/ml
Energy (kJ)	1576 kJ	19%
Energy (kcal)	377 kcal	19%
Fat	20 g	29%
of which Saturates	6.1 g	31%
Carbohydrate	47 g	18%
of which Sugars	23 g	26%
Protein	3.5 g	7%
Salt	0.81 g	14%

HANDLING &
STORAGE
INFORMATION

Directions For Use
Ready to eat, once defrosted.

Storage Instructions
Distribute and store frozen (below -18°C). Once defrosted, consume within 5 days.

ORIGIN

Product Country of Origin/Place of Provenance United Kingdom

The information on the [Erudus System](#) has been supplied by the manufacturers of the products and, whilst the owners of the Erudus System take steps to ensure the information is regularly updated, they give no warranty and no guarantee that the information is accurate. Product information and ingredients may change, please always read product labels carefully in addition to using the information provided by Erudus.

We do not accept liability for any inaccuracies or incorrect information contained on this site.
Please visit <http://www.erudus.com/terms-and-conditions> for full terms and conditions.