

Changed Sep 03, 2025 08:52

Reviewed Sep 03, 2025 08:52

Erudus ID eeee8d541dbb49fabebb1fd72714b107

Version 3.0

Status Published

690175

# Raspberry and Coconut Slice, 12 Portion

Raspberry And Coconut Slice

## PRODUCT DESCRIPTION

Sweet short crust pastry base layered with raspberry jam and sweetened milk and coconut topping

Brand	CAKE
Manufacturer	Lomond Fine Foods Ltd
Manufacturer Product Code	12456
Product Type	Food
Product Category	Traybake
Storage Type	Frozen
Erudus ID	eeee8d541dbb49fabebb1fd72714b107
Specification Type	Bakery Products



Inner Component GTIN	5060268091153
Outer Case GTIN	15060268091150



## INGREDIENTS

### Ingredient Declaration

Raspberry Jam (23%) (Glucose Syrup, Sugar, Concentrated Raspberry Puree, Water, Gelling Agent - Pectin; Acidity Regulators - Citric Acid, Trisodium Citrate, Colour - Anthocyanin), WHEAT Flour (WHEAT Flour, Calcium Carbonate, Iron, Niacin, Thiamin), Sweetened Condensed MILK (18%) (MILK, Sugar, Lactose (MILK)), Desiccated Coconut (SULPHITES) (18%), Butter (MILK, Salt), Sugar.

## ALLERGENS

### Product Contains:

Celery/Celeriac	No	Mustard	No
Cereals Containing Gluten	Yes	Nuts (Tree)	May Contain
Barley	May Contain	Almond nuts	May Contain
Oats	May Contain	Brazil nuts	No
Rye	No	Cashew nuts	No
Wheat (including Spelt and Khorasan)	Yes	Hazelnuts	May Contain
Crustacea	No	Macadamia (Queensland) nuts	No
Eggs	May Contain	Pecan nuts	No
Fish	No	Pistachio nuts	May Contain
Lupin	No	Walnuts	May Contain
Milk	Yes	Peanuts	No
Molluscs	No	Sesame Seeds	No
		Soybeans	May Contain
		Sulphur Dioxide and Sulphites	Yes

Risk Source:

Barley (Risk Source)	Line	Oats (Risk Source)	Line
Eggs (Risk Source)	Line	Tree Nuts (Risk Source)	Line
Almond nuts (Risk Source)	Line	Hazelnuts (Risk Source)	Line
Pistachio nuts (Risk Source)	Line	Walnuts (Risk Source)	Line
Soybeans (Risk Source)	Line		

Additional Allergen Information

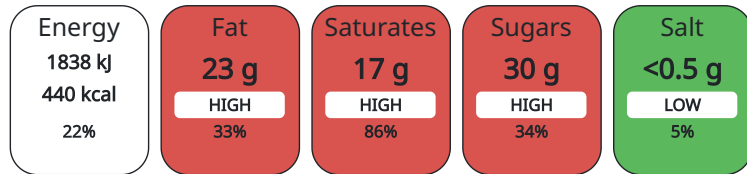
For allergens, including cereals containing gluten, refer to ingredients in CAPITALS May contain traces of: oats, barley, tree nuts, egg, soya.

DIET SUITABILITY

Vegan Diet	No	Vegetarian Diet	Suitable for
Halal Diet	No	Kosher Diet	No

NUTRITIONAL INFORMATION AS SOLD

Each 100g/ml portion contains:



of your reference intake.

Typical values per 100g/ml : Energy 440kcal / 1838kj

Nutrient	per 100g	RI per 100g
Energy (kJ)	1838 kJ	22%
Energy (kcal)	440 kcal	22%
Fat	22.9 g	33%
of which Saturates	17.2 g	86%
Carbohydrate	51.8 g	20%
of which Sugars	30.2 g	34%
Fibre	3.2 g	
Protein	5.2 g	10%
Salt	0.27 g	5%

HANDLING & STORAGE INFORMATION

Directions For Use

Frozen: 1 year from date of manufacture Ambient: 90 days Once opened store in an airtight container and consume within 5 days

Storage Instructions

Store at -18°C or colder. Defrost for 6 - 8 hours before serving. Ambient: Store in a cool, dry place.

ORIGIN

Product Country of Origin United Kingdom

Origin of the Primary Ingredient United Kingdom

CONTACT INFORMATION

Address

Lomond Fine Foods Ltd  
75 Keppochhill Drive  
70 Spiersbridge Road, Thornliebank, Glasgow, G46 7SN  
G21 1HX  
Springburn  
Glasgow  
Scotland

anne@lomond.lfs.com  
0141 353 6777

The information on the [Erudus System](#) has been supplied by the manufacturers of the products and, whilst the owners of the Erudus System take steps to ensure the information is regularly updated, they give no warranty and no guarantee that the information is accurate. Product information and ingredients may change, please always read product labels carefully in addition to using the information provided by Erudus.

We do not accept liability for any inaccuracies or incorrect information contained on this site.  
Please visit <http://www.erudus.com/terms-and-conditions> for full terms and conditions.