

Changed Jun 11, 2024 13:59

Reviewed Jun 11, 2024 13:59

Erudus ID 9ed6693b46db4213ad2c0bf710831dd7

Version 3.0

Status Published

830036

Heartbrand Ice Cream Stick Feast Original chunky chocolate 90 ML

Heartbrand Ice Cream Stick Feast Original Chunky Chocolate 90 MI 35x90ml

PRODUCT DESCRIPTION

Chocolate flavour ice cream with a solid chocolate flavour centre (13%) and crisp chocolate flavour coating (19%) with biscuit pieces (1,5%).

Manufacturer Product Code	18648606
Product Type	Food
Product Category	Other
Storage Type	Frozen
Erudus ID	9ed6693b46db4213ad2c0bf710831dd7
Specification Type	Generic



Inner Component GTIN	8712100888274
Outer Case GTIN	8000920864869



INGREDIENTS

Ingredient Declaration

Ingredients: Reconstituted skimmed MILK, coconut oil, sugar, glucose syrup, glucose-fructose syrup, skimmed MILK powder, WHEAT flour, fat-reduced cocoa powder, emulsifiers (SOYBEAN lecithin, mono- and diglycerides of fatty acids), whey solids (MILK), stabilisers (guar gum, locust bean gum), flavouring, salt, raising agent (ammonium hydrogen carbonate).

ALLERGENS

Product Contains:

Celery/Celeriac	No
Cereals Containing Gluten	Yes
Barley	No
Oats	No
Rye	No
Wheat (including Spelt and Khorasan)	Yes
Crustacea	No
Eggs	May Contain
Fish	No
Lupin	No
Milk	Yes
Molluscs	No

Mustard	No
Nuts (Tree)	May Contain
Almond nuts	May Contain
Brazil nuts	No
Cashew nuts	No
Hazelnuts	May Contain
Macadamia (Queensland) nuts	No
Pecan nuts	No
Pistachio nuts	No
Walnuts	No
Peanuts	No
Sesame Seeds	No
Soybeans	Yes
Sulphur Dioxide and Sulphites	No

Risk Source:

Additional Allergen Information

May contain: hazelnut, almond, egg.

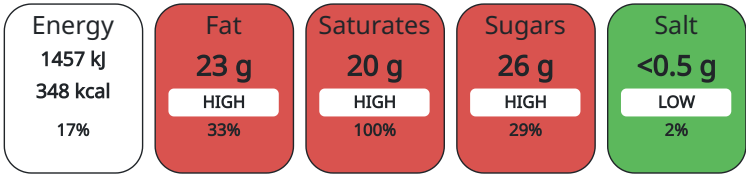
DIET SUITABILITY

Vegan Diet	No
Halal Diet	No

Vegetarian Diet	No
Kosher Diet	No

NUTRITIONAL
INFORMATION AS
SOLD

Each 100g/ml portion contains:



of your reference intake.

Typical values per 100g/ml : Energy 348kcal / 1457kJ

Nutrient	per 100g	RI per 100g	per 90g serving	RI per 90g serving
Energy (kJ)	1457 kJ	17%	1311.3	16%
Energy (kcal)	348 kcal	17%	313.2	16%
Fat	23 g	33%	20.7 g	30%
of which Saturates	20 g	100%	18 g	90%
Carbohydrate	32 g	12%	28.8 g	11%
of which Sugars	26 g	29%	23.4 g	26%
Protein	3.1 g	6%	2.79 g	6%
Salt	0.13 g	2%	0.12 g	2%

Serving Size	90 g
--------------	------

HANDLING &
STORAGE
INFORMATION

Directions For Use

-

Storage Instructions

Store at -18°C

ORIGIN	Product Country of Origin		Great Britain, Portugal
	Origin of the Primary Ingredient		
MARKETING INFORMATION	Marketing Description		
	A delicious Feast Original ice cream stick with a chunky chocolatey core wrapped in chocolate flavour ice cream, crisp coating and biscuit pieces, An exciting combination of smooth and crunchy texture with a rich chocolate flavour, Crispy, creamy and delicious ice cream stick with a solid nugget of chocolate flavour perfection inside, This classic chocolate ice cream treat is a real 'feast' for the senses.		
CONTACT INFORMATION	Address		Technical
	Unilever UK Limited Lever House 3 St James Road KT1 2BA Kingston Upon Thames England Bihter.Pamay@unilever.com 020 8547 8989		Theresa Crayston Theresa.Crayston@unilever.com 07825008860 R&D Assistant Deploy Manager UFS Commercial Iwan Phillips Route to Market, Away From Home Complaints via the Careline - details on pack 0800 783 3728

The information on the [Erudus System](#) has been supplied by the manufacturers of the products and, whilst the owners of the Erudus System take steps to ensure the information is regularly updated, they give no warranty and no guarantee that the information is accurate. Product information and ingredients may change, please always read product labels carefully in addition to using the information provided by Erudus.

We do not accept liability for any inaccuracies or incorrect information contained on this site.
Please visit <http://www.erudus.com/terms-and-conditions> for full terms and conditions.