

Supplier's Product Code :
Product Added :
Last Updated by Supplier :
erudus id :

8080
13 August 2014
21 December 2020
c56645336c4a4d5aaf59028da7677eba

The information on the [Erudus System](#) has been supplied by the manufacturers of the products and, whilst the owners of the Erudus System take steps to ensure the information is regularly updated, they give no warranty and no guarantee that the information is accurate. Product information and ingredients may change, please always read product labels carefully in addition to using the information provided by Erudus One.

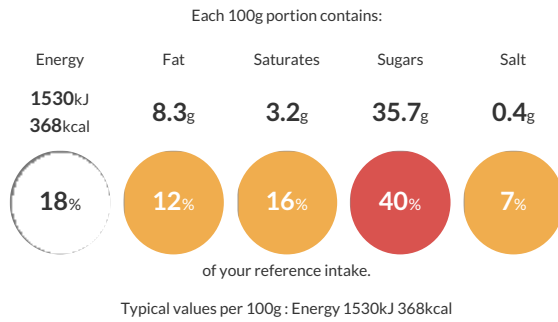
We do not accept liability for any inaccuracies or incorrect information contained on this site. Please visit <http://www.erudus.com/terms-and-conditions> for full terms and conditions.

Martins Gingerbread

Baked gingerbread man

Traded Unit GTIN: **5026420000203** Internal GTIN: Supplier : **Martins Craft Bakery Ltd** Suppliers Product Code : **8080**

Reference Intake



Nutritional Information

Typical Values	Per 100g
Energy	1530kJ 368kCal
Carbohydrates	66.6g
of which sugars	35.7g
Fat	8.3g
of which saturates	3.2g
Fibre	-g
Protein	6g
Salt	0.4g

Allergy Information

Key: **Contains** **May Contain**



Dietary Information

Key: **Suitable for**



Ingredients

WHEAT Flour (with Calcium Carbonate, Iron, Niacin, Thiamin), Sugar, Golden Syrup, MILK, Vegetable Oils (Palm Oil, Rapeseed Oil), Water, Raising Agents (Sodium Bicarbonate, Diphosphates, Sodium Carbonates), Ground Ginger, Salt.