

Changed Dec 06, 2024 11:23

Reviewed Dec 06, 2024 11:23

Erudus ID c1d9b22614394c579b20278cd8229dd5

Version 5.0

Status Published

63947 Nutella Tiffin 15ptn

Nutella Tiffin

PRODUCT DESCRIPTION

Biscuit base with choloate flavour coating and sultanas topped with nutella and chocolate flavour coating finished with mild chocolate compound and sugar coated hazelnut pieces

Brand	CAKE
Manufacturer	Lomond Fine Foods Ltd
Manufacturer Product Code	63947
Product Type	Food
Product Category	Traybake
Storage Type	Frozen
Erudus ID	c1d9b22614394c579b20278cd8229dd5
Specification Type	Bakery Products



Inner Component GTIN 5060268093393

Inner Pack GTIN 5060268093393

Outer Case GTIN 15060268093390



INGREDIENTS

Ingredient Declaration

Milk Chocolate Flavour Topping (Sugar, Vegetable Fats (Palm Kernel, Palm), Whey Powder (**MILK**), Wheat Flour (**WHEAT** Flour, Calcium Carbonate, Niacin, Iron, Thiamin), Fat Reduced Cocoa Powder, Emulsifier (**SOYA** Lecithin, Polyglycerol Polyricinoleate), Natural Flavouring), Digestive Biscuit Pieces (Wheat Flour (**WHEAT** Flour, Calcium Carbonate, Iron, Niacin, Thiamin), Wholemeal **WHEAT** Flour, Vegetable Shortening (Palm Oil, Rapeseed Oil), Sugar, Partially Invert Sugar Syrup, Raising Agents (Sodium Bicarbonate, Ammonium Bicarbonate), Salt), Digestive Biscuit Pieces (Wheat Flour (**WHEAT** Flour, Calcium Carbonate, Iron, Niacin, Thiamin), Wholemeal **WHEAT** Flour, Vegetable Shortening (Palm Oil, Rapeseed Oil), Sugar, Partially Invert Sugar Syrup, Raising Agents (Sodium Bicarbonate, Ammonium Bicarbonate), Salt), Margarine (Palm Oil, Rapeseed Oil, Water, Salt, Emulsifier (Mono and Diglycerides of Fatty Acids), Flavouring, Colours (Annatto Bixin, Curcumin)), Nutella (9%) (Sugar, Palm Oil, **HAZELNUTS (NUTS)**, Skimmed **MILK** Powder, Fat Reduced Cocoa, Emulsifier (**SOYA** Lecithin), Vanillin), Sultanas (Sultanas, Sunflower Oil), Invert Sugar Syrup, Sugar Coated Hazelnut Pieces (1%) (Sugar, **HAZELNUTS (NUTS)**)).

ALLERGENS

Product Contains:

Celery/Celery	No
Cereals Containing Gluten	Yes
Barley	May Contain
Oats	May Contain
Rye	No
Wheat (including Spelt and Khorasan)	Yes
Crustacea	No
Eggs	May Contain
Fish	No
Lupin	No
Milk	Yes
Molluscs	No

Mustard	No
Nuts (Tree)	Yes
Almond nuts	May Contain
Brazil nuts	No
Cashew nuts	No
Hazelnuts	Yes
Macadamia (Queensland) nuts	No
Pecan nuts	No
Pistachio nuts	May Contain
Walnuts	May Contain
Peanuts	No
Sesame Seeds	No
Soybeans	Yes
Sulphur Dioxide and Sulphites	May Contain

Risk Source:

Barley (Risk Source)	Line
Eggs (Risk Source)	Line
Pistachio nuts (Risk Source)	Line
Sulphur Dioxide and Sulphites (Risk Source)	Line

Oats (Risk Source)	Line
Almond nuts (Risk Source)	Line
Walnuts (Risk Source)	Line

Allergen Statement On Pack

Allergy Advice: For allergens, including cereals containing gluten, see ingredients in bold. May also contain traces of Oats, Barley, Sulphites, other Tree Nuts and Eggs

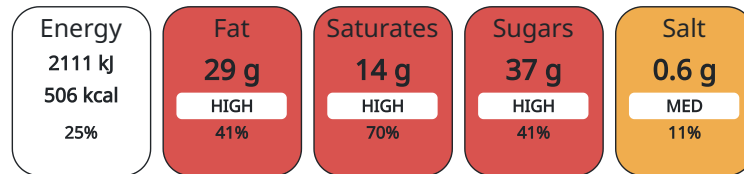
DIET SUITABILITY

Vegan Diet	No
Halal Diet	No

Vegetarian Diet	Suitable for
Kosher Diet	No

NUTRITIONAL INFORMATION AS SOLD

Each 100g/ml portion contains:



of your reference intake.

Typical values per 100g/ml : Energy 506kcal / 2111kJ

Nutrient	per 100g	RI per 100g	per 93g serving	RI per 93g serving
Energy (kJ)	2111 kJ	25%	1963.23	23%
Energy (kcal)	506 kcal	25%	470.58	24%
Fat	28.8 g	41%	26.78 g	38%
of which Saturates	14 g	70%	13.02 g	65%
Carbohydrate	56.7 g	22%	52.73 g	20%
of which Sugars	36.7 g	41%	34.13 g	38%
Fibre	1.3 g		1.21 g	
Protein	4.4 g	9%	4.09 g	8%
Salt	0.63 g	11%	0.59 g	10%

Serving Size	93 g
Number of Servings	15 Servings

Source of Nutritional Information Calculation from known/accepted datasets

HANDLING &
STORAGE
INFORMATION

Directions For Use

Keep frozen until ready to defrost

Storage Instructions

Storage: Store at -18°C or colder. Defrost for 6 - 8 hours before serving. Store unopened in a cool dry place for up to 90 days for ambient shelflife. Eat within 5 days of opening.

Storage Instructions After Opening

Store in an air tight container and consume within 5 days.

ORIGIN

Product Country of Origin Scotland

Additional Origin Details

Produced in Scotland

Origin of the Primary Ingredient

Address

Lomond Fine Foods Ltd
75 Keppochhill Drive
70 Spiersbridge Road, Thornliebank, Glasgow, G46 7SN
G21 1HX
Springburn
Glasgow
Scotland

CONTACT
INFORMATION

anne@lomond.lfs.com
0141 353 6777

The information on the [Erudus System](#) has been supplied by the manufacturers of the products and, whilst the owners of the Erudus System take steps to ensure the information is regularly updated, they give no warranty and no guarantee that the information is accurate. Product information and ingredients may change, please always read product labels carefully in addition to using the information provided by Erudus.

We do not accept liability for any inaccuracies or incorrect information contained on this site.
Please visit <http://www.erudus.com/terms-and-conditions> for full terms and conditions.