

# LION Milk Chocolate Bar 36x50g

Lion 36x50g 36x50.6g

PRODUCT DESCRIPTION  
Filled wafer with caramel (35%) and cereals (8%) covered with milk chocolate (38%)

Brand	Nestle UK
Manufacturer Product Code	12410542
Product Type	Food
Product Category	Confectionery
Storage Type	Ambient
Erudus ID	55af983957ad4ce2b0c32e318a6824e9
Specification Type	Legacy



Inner Component GTIN	7613034989253
Outer Case GTIN	07613034989260



## INGREDIENTS

**Ingredient Declaration**  
Glucose-Fructose Syrup, Sugar, **WHEAT** Flour, Sweetened Condensed **MILK** (**MILK**, Sugar), Cocoa Butter, Palm Oil, Whole **MILK** Powder, Cocoa Mass, Whey Powder (from **MILK**), Maltodextrin, Skimmed **MILK** Powder, **WHEAT** Starch, Emulsifier (Sunflower Lecithin), Salt, Raising Agent (Sodium Bicarbonate), Caramelised Sugar, Natural Vanilla Flavouring, Thickener (Carrageenan)

## ALLERGENS

Product Contains:

Celery/Celeriac	No
Cereals Containing Gluten	Yes
Barley	No
Oats	No
Rye	No
Wheat (including Spelt and Khorasan)	Yes
Gluten content <20ppm	No
Crustacea	No
Eggs	No
Fish	No
Lupin	No
Milk	Yes
Molluscs	No

Mustard	No
Nuts (Tree)	May Contain
Almond nuts	May Contain
Brazil nuts	May Contain
Cashew nuts	May Contain
Hazelnuts	May Contain
Macadamia (Queensland) nuts	May Contain
Pecan nuts	May Contain
Pistachio nuts	May Contain
Walnuts	May Contain
Peanuts	May Contain
Sesame Seeds	No
Soybeans	May Contain
Sulphur Dioxide and Sulphites	No

Risk Source:

**Additional Allergen Information**  
Contains: MILK and WHEAT. May Contain: SOYA, NUTS and PEANUTS.

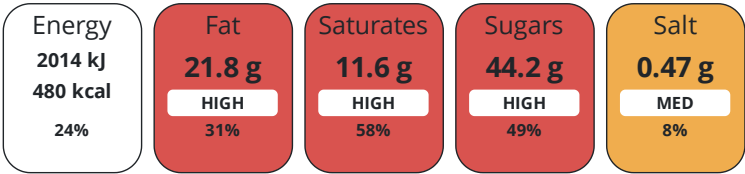
## DIET SUITABILITY

Suitable for Coeliacs	No
Kosher Diet	No
Vegan Diet	No

Halal Diet	No
Vegetarian Diet	No

NUTRITIONAL  
INFORMATION

Each 100g/ml portion contains:



of your reference intake.

Typical values per 100g/ml : Energy 480kcal / 2014kJ

Nutrient	per 100g/ml	RI per 100g/ml
Energy (kJ)	2014 kJ	24%
Energy (kcal)	480 kcal	24%
Fat	21.8 g	31%
of which Saturates	11.6 g	58%
Carbohydrate	64.9 g	25%
of which Sugars	44.2 g	49%
Fibre	1.5 g	
Protein	5.4 g	11%
Salt	0.47 g	8%

HANDLING &  
STORAGE  
INFORMATION

Directions For Use

Ready to eat

Storage Instructions

Store in a cool, dry place

ORIGIN

Product Country of Origin      Poland

CONTACT  
INFORMATION

Address

Nestle UK  
Nestlé UK Ltd  
PO Box 207  
York  
YO91 1WS  
England

P: (Phone) 0800 00 00 30 (UK)

Complaints Contact

consumer.services@uk.nestle.com

P: (Phone) 0800 00 00 30 (UK)

The information on the [Erudus System](#) has been supplied by the manufacturers of the products and, whilst the owners of the Erudus System take steps to ensure the information is regularly updated, they give no warranty and no guarantee that the information is accurate. Product information and ingredients may change, please always read product labels carefully in addition to using the information provided by Erudus.

We do not accept liability for any inaccuracies or incorrect information contained on this site.  
Please visit <http://www.erudus.com/terms-and-conditions> for full terms and conditions.