

MALTS std bag 40x37g Fairtrade GB IE COP

Maltesers Std Bag 37g 40x0.04kg

PRODUCT DESCRIPTION

Bite Size Chocolate

Brand	Mars
Manufacturer Product Code	183685
Product Type	Food
Product Category	Confectionery
Storage Type	Ambient
Erudus ID	31def089aaa747568326b2ecb0162144
Specification Type	Generic
Inner Component GTIN	5000159020312
Outer Case GTIN	05000159379540



INGREDIENTS

Ingredient Declaration
Sugar, Skimmed MILK Powder, Cocoa Butter, Glucose Syrup, BARLEY Malt Extract, Cocoa Mass, Palm Fat, Whey Permeate (MILK), MILK Fat, Palm Kernel Fat, Emulsifiers (SOYA Lecithin, E492), WHEAT Flour, Raising Agents (E341, E500, E501), WHEAT Gluten, Sweet Whey Powder (MILK), Salt, Glazing Agent (Pectins), Milk Chocolate contains Milk Solids 14% minimum, Milk Chocolate contains Vegetable Fats in addition to Cocoa Butter

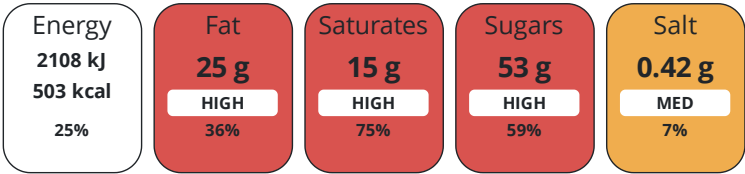
Ingredient Statements
Milk Chocolate contains Milk Solids 14% minimum. Milk Chocolate contains vegetable fats in addition to coca butter.

ALLERGENS

Product Contains:			
Celery/Celeriac	No	Mustard	No
Cereals Containing Gluten	Yes	Nuts (Tree)	No
Barley	Yes	Almond nuts	No
Oats	No	Brazil nuts	No
Rye	No	Cashew nuts	No
Wheat (including Spelt and Khorasan)	Yes	Hazelnuts	No
Crustacea	No	Macadamia (Queensland) nuts	No
Eggs	No	Pecan nuts	No
Fish	No	Pistachio nuts	No
Lupin	No	Walnuts	No
Milk	Yes	Peanuts	No
Molluscs	No	Sesame Seeds	No
		Soybeans	Yes
		Sulphur Dioxide and Sulphites	No

NUTRITIONAL
INFORMATION

Each 100g/ml portion contains:



of your reference intake.
Typical values per 100g/ml : Energy 503kcal / 2108kJ

Nutrient	per 100g	RI per 100g
Energy (kJ)	2108 kJ	25%
Energy (kcal)	503 kcal	25%
Fat	25 g	36%
of which Saturates	15 g	75%
Carbohydrate	61 g	23%
of which Sugars	53 g	59%
Protein	8.5 g	17%
Salt	0.42 g	7%

HANDLING &
STORAGE
INFORMATION

Directions For Use

Ready to eat

Storage Instructions

Keep cool and dry

ORIGIN

Product Country of Origin United Kingdom

CONTACT
INFORMATION

Origin of the Primary Ingredient

Address

Mars
3d Dundee Road
Slough
SL1 4LG
United Kingdom

Technical Contact

Charlie Perry
charlie.perry@effem.com

The information on the [Erudus System](#) has been supplied by the manufacturers of the products and, whilst the owners of the Erudus System take steps to ensure the information is regularly updated, they give no warranty and no guarantee that the information is accurate. Product information and ingredients may change, please always read product labels carefully in addition to using the information provided by Erudus.

We do not accept liability for any inaccuracies or incorrect information contained on this site.
Please visit <http://www.erudus.com/terms-and-conditions> for full terms and conditions.