

690019

# STICKY SALTED CARAMEL CAKE (1 x 14 PRE-PORTIONED)

Sticky Salted Caramel Cake 1x2.1kg

## PRODUCT DESCRIPTION

A round moist toffee sponge cake filled with sweet salted caramel buttercream and topped with salted caramel. The cake is finished with a random toffee cubes, a feathering of chocolate and caramel sauces and salty caramel sweet crunchy crispies. This gateau is pre-cut into 14 portions and packed 1 gateau per outer.

Brand	C D T Sidoli (Welshpool) Limited
Manufacturer Product Code	59179
Product Type	Food
Product Category	Desserts
Storage Type	Frozen
Erudus ID	8914093bf77441038c7072b358f25197
Specification Type	Generic



Outer Case GTIN

5015091591790



## INGREDIENTS

### Ingredient Declaration

Sugar, sweetened condensed MILK (whole MILK, sugar), EGG, WHEAT flour (with added calcium, iron, niacin, thiamin), rapeseed oil, water, fudge pieces (4%) (sugar, sweetened condensed MILK (MILK, sugar), fondant (sugar, glucose syrup, water), glucose syrup, palm oil, butter oil (MILK), natural flavouring), margarine (palm oil, rapeseed oil, water, emulsifier (mono- and diglycerides of fatty acids), natural flavouring), brown sugar, modified maize starch, butter (MILK), caramel sauce (0.9%) (glucose syrup, water, caramel (sugar, water), gelling agents (pectin, sodium alginate, carrageenan, xanthan gum), acid (lactic acid), acidity regulators (sodium lactate, tri-calcium phosphate), natural flavouring, preservative (potassium sorbate), firming agent (potassium chloride)), MILK protein, raising agents (diphosphates, potassium carbonates), palm kernel oil, salted caramel crispies (white chocolate with caramel (sugar, cocoa butter, whole MILK powder, caramel powder (skimmed MILK powder, whey powder (MILK), sugar, MILK fat, natural vanilla flavouring), skimmed MILK powder, caramelised sugar, emulsifier (lecithin), cocoa mass, salt), salted crisped cereals (WHEAT flour, sugar, salt, OAT flour, WHEAT malt flour, raising agent (sodium bicarbonate), natural vanilla flavouring), glucose syrup, sugar, glazing agent (acacia gum)), palm stearin oil, emulsifiers (mono-and diglycerides of fatty acids, sodium stearyl-2-lactylate), WHEAT protein, colour blend (BARLEY malt extract, curcumin), glucose syrup, salt, WHEAT starch, humectant (glycerine), flavouring, fat reduced cocoa powder, vegetarian gelatine (gelling agents (pectin, carrageenan, locust bean gum), modified maize starch, emulsifier (lactic acid esters of mono- and diglycerides of fatty acids), dextrose, sucrose), gelling agent (pectin), natural flavouring.

ALLERGENS

Product Contains:

Celery/Celeriac	No
Cereals Containing Gluten	Yes
Barley	Yes
Oats	Yes
Rye	No
Wheat (including Spelt and Khorasan)	Yes
Crustacea	No
Eggs	Yes
Fish	No
Lupin	No
Milk	Yes
Molluscs	No

Mustard	No
Nuts (Tree)	May Contain
Almond nuts	May Contain
Brazil nuts	No
Cashew nuts	No
Hazelnuts	May Contain
Macadamia (Queensland) nuts	No
Pecan nuts	May Contain
Pistachio nuts	May Contain
Walnuts	May Contain
Peanuts	No
Sesame Seeds	No
Soybeans	No
Sulphur Dioxide and Sulphites	No

Risk Source:

Tree Nuts (Risk Source)	Factory
Hazelnuts (Risk Source)	Factory
Pistachio nuts (Risk Source)	Factory

Almond nuts (Risk Source)	Factory
Pecan nuts (Risk Source)	Factory
Walnuts (Risk Source)	Factory

Allergen Statement On Pack

For allergens, Including cereals containing gluten,see ingredients in CAPITALS.

Additional Allergen Information

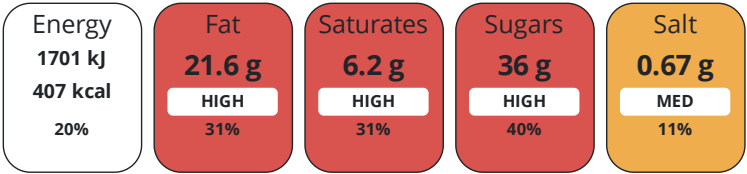
MADE IN A FACTORY THAT ALSO HANDLES THE FOLLOWING ALLERGEN: NUTS.

DIET  
SUITABILITY

Vegan Diet	No	Vegetarian Diet	Suitable for
Halal Diet	No	Kosher Diet	No

NUTRITIONAL  
INFORMATION

Each 100g/ml portion contains:



of your reference intake.

Typical values per 100g/ml : Energy 407kcal / 1701kJ

Nutrient	per 100g	RI per 100g	per 150g serving	RI per 150g serving
Energy (kJ)	1701 kJ	20%	2551.5 kJ	30%
Energy (kcal)	407 kcal	20%	610.5 kcal	31%
Fat	21.6 g	31%	32.4 g	46%
of which Saturates	6.2 g	31%	9.3 g	47%
Carbohydrate	48 g	18%	72 g	28%
of which Sugars	36 g	40%	54 g	60%
Fibre	0.5 g		0.8 g	
Protein	4.5 g	9%	6.8 g	14%
Salt	0.67 g	11%	1 g	17%
Serving Size	150 g			

HANDLING &  
STORAGE  
INFORMATION

Directions For Use

DEFROSTING INSTRUCTIONS: SLICE: Remove a slice from frozen and defrost under refrigeration for approximately 2 hours.  
WHOLE: Defrost under refrigeration for approximately 5 hours. HANDLING INSTRUCTIONS: Defrost prior to serving. Keep refrigerated once defrosted. Use within 72 hours of defrost. Do not re-freeze, once defrosted.

Storage Instructions

At or below minus 18°C (0°F)

ORIGIN

Product Country of Origin United Kingdom

Additional Origin Details

N/A

CONTACT  
INFORMATION

Origin of the Primary Ingredient

Address

C D T Sidoli (Welshpool) Limited  
Henfaes Lane  
Welshpool  
Powys  
SY21 7BE  
Wales

Technical Contact

Michele Fischetti  
Technical Manager  
mfischetti@sidoli.co.uk

P: (Phone) 01938 555234

P: (Phone) 01938 555234

Complaints Contact

Hera Gottschalk  
Customers Service  
customer\_service@sidoli.co.uk

Commercial Contact

Lorna Gries  
Sales Manager  
lgries@sidoli.co.uk

P: (Phone) 01938 555234

The information on the [Erudus System](#) has been supplied by the manufacturers of the products and, whilst the owners of the Erudus System take steps to ensure the information is regularly updated, they give no warranty and no guarantee that the information is accurate. Product information and ingredients may change, please always read product labels carefully in addition to using the information provided by Erudus.

We do not accept liability for any inaccuracies or incorrect information contained on this site.  
Please visit <http://www.erudus.com/terms-and-conditions> for full terms and conditions.