

Smkd Salm Crm Chse Bagels 22g (1 x 45)

Smkd Salm Crm Chse Bagels 22g (1 X 45)

PRODUCT DESCRIPTION

Delicious mini bagels, generously filled with lemon and chive flavoured cream cheese and a roll of smoked salmon. (1 x 45)

Brand	Central Foods Group Limited
Manufacturer Product Code	FDCAN07A
Product Type	Food
Product Category	Seafood - Fish
Storage Type	Frozen
Erudus ID	451c814186684838b1516ddefb7c2892
Specification Type	Legacy
Outer Case GTIN	5060089683834



INGREDIENTS

Ingredient Declaration

Bagel (Fortified **WHEAT** Flour (with Calcium, Iron, Niacin, Thiamin), Water, Whole **MILK** Powder, Margarine (Palm Oil, Coconut Oil, Rapeseed Oil, Water, Salt, Emulsifier (Mono-and Diglycerides of Fatty Acids), Acidity Regulators (Citric Acid, Disodium Citrate), Natural Flavouring, Colour (Natural Carotenes)), Caster Sugar, Yeast, Sea Salt). Smoked Salmon (**FISH**) (25%), Cream Cheese (14%) (**MILK**) (Cream, Skimmed **MILK**, **MILK** Solids, Modified Starch, Salt, Preservative (Potassium Sorbate), Culture), Double Cream (**MILK**), Lemon Juice, Chives.

ALLERGENS

Product Contains:

Celery/Celeriac	No	Mustard	No
Cereals Containing Gluten	Yes	Nuts (Tree)	No
Barley	No	Almond nuts	No
Oats	No	Brazil nuts	No
Rye	No	Cashew nuts	No
Wheat (including Spelt and Khorasan)	Yes	Hazelnuts	No
Gluten content <20ppm	No	Macadamia (Queensland) nuts	No
Crustacea	No	Pecan nuts	No
Eggs	No	Pistachio nuts	No
Fish	Yes	Walnuts	No
Lupin	No	Peanuts	No
Milk	Yes	Sesame Seeds	No
Molluscs	No	Soybeans	No
		Sulphur Dioxide and Sulphites	No

Additional Allergen Information

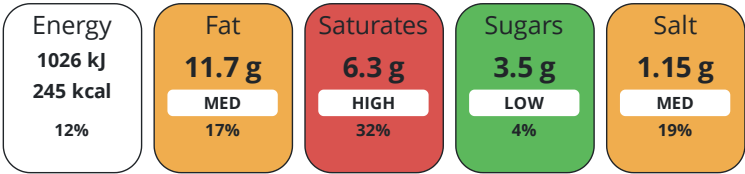
For allergens, including cereals containing gluten, see ingredients in CAPITALS.

DIET SUITABILITY

Suitable for Coeliacs	No	Halal Diet	No
Kosher Diet	No	Vegetarian Diet	No
Vegan Diet	No		

NUTRITIONAL
INFORMATION

Each 100g/ml portion contains:



of your reference intake.

Typical values per 100g/ml : Energy 245kcal / 1026kJ

Nutrient	per 100g/ml	RI per 100g/ml	per 22g/ml serving	RI per 22g/ml serving
Energy (kJ)	1026 kJ	12%	225.7 kJ	3%
Energy (kcal)	245 kcal	12%	53.9 kcal	3%
Fat	11.7 g	17%	2.6 g	4%
of which Saturates	6.3 g	32%	1.4 g	7%
Carbohydrate	25.6 g	10%	5.6 g	2%
of which Sugars	3.5 g	4%	0.8 g	1%
Fibre	1 g		0.2 g	
Protein	10.5 g	21%	2.3 g	5%
Salt	1.15 g	19%	0.3 g	5%
Sodium	460 mg		101.2 mg	
Serving Size	22 g			

HANDLING &
STORAGE
INFORMATION

Directions For Use

From Frozen unless otherwise stated Thaw and serve: simply arrange bagels on a platter whilst frozen. Leave to defrost for 2 hours in the refrigerator. Once defrosted keep refrigerated and use within 6 hours. Do not refreeze once defrosted.

Storage Instructions

Keep Frozen. Store at -18°C or below

ORIGIN

Product Country of OriginUnited Kingdom

Additional Origin Details

United Kingdom
Address
Central Foods Group Limited
Maple Court
Ash Lane
Collingtree
Northamptonshire
NN4 0NB
England

P: (Phone) 01604 858 522

Complaints Contact

Karen Wright
Customer Care Admin Assistant
kwright@centralfoods.co.uk

P: (Phone) 01604 878 299

Technical Contact

Chris Stobart
Technical Manager
technical@centralfoods.co.uk

P: (Phone) 01604 878 276

Commercial Contact

Oliver Sampson
Managing Director
osampson@centralfoods.co.uk

P: (Phone) 07715 073 273

CONTACT
INFORMATION

The information on the [Erudus System](#) has been supplied by the manufacturers of the products and, whilst the owners of the Erudus System take steps to ensure the information is regularly updated, they give no warranty and no guarantee that the information is accurate. Product information and ingredients may change, please always read product labels carefully in addition to using the information provided by Erudus.

We do not accept liability for any inaccuracies or incorrect information contained on this site.
Please visit <http://www.erudus.com/terms-and-conditions> for full terms and conditions.