

Supplier's Product Code :  
Product Added :  
Last Updated by Supplier :  
erudus id :

4476  
14 April 2021  
14 April 2021  
dd9714a74b1441cbb5235ce377e7ca1e

The information on the [Erudus System](#) has been supplied by the manufacturers of the products and, whilst the owners of the Erudus System take steps to ensure the information is regularly updated, they give no warranty and no guarantee that the information is accurate. Product information and ingredients may change, please always read product labels carefully in addition to using the information provided by Erudus One.

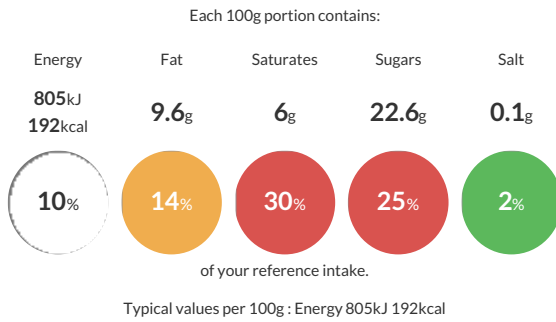
We do not accept liability for any inaccuracies or incorrect information contained on this site. Please visit <http://www.erudus.com/terms-and-conditions> for full terms and conditions.

## Dairy Strawberry Ice Cream 4.75 Litres

Strawberry Flavoured Dairy Ice Cream with Strawberries

Traded Unit GTIN: **5030210003510** Internal GTIN: **5030210003510** Supplier : **New Forest Ice Cream** Suppliers Product Code : **4476**

### Reference Intake



### Nutritional Information

Typical Values	Per 100g
Energy	805kJ 192kCal
Carbohydrates	23.3g
of which sugars	22.6g
Fat	9.6g
of which saturates	6g
Fibre	0.4g
Protein	3.4g
Salt	0.1g

### Allergy Information

Key: **Contains** **May Contain**



#### Allergen Statement

May contain EGG, SOYA, GLUTEN

### Dietary Information

Key: **Suitable for**



### Ingredients

Whole MILK, strawberry preparation (19%) [contains strawberries 60%, sugar, water, modified waxy maize starch, citric acid, natural colouring anthocyanins.], double cream (15%) [from MILK], sugar, skimmed MILK powder, dextrose, emulsifier mono- and diglycerides of fatty acids (vegetable origin), stabilisers sodium alginate, guar gum. Natural flavouring (0.11%) [contains mixture of natural flavouring substances and natural flavouring preparations, propylene glycol, water and alcohol.], natural colouring betanin.