

700158

CHERRY & ALMOND SLICE (1 x 12 ptn)

Cherry & Almond Slice 1x976g

PRODUCT DESCRIPTION

A buttery shortcake base, topped with cherry filling and an almond sponge, finished generously with flaked almonds.

Manufacturer Product Code	071386
Product Type	Food
Product Category	Bakery - General
Storage Type	Frozen
Erudus ID	fe1034939fbf442f9c50770a2187eac0
Specification Type	Legacy



Outer Case GTIN 5060044071386



INGREDIENTS

Ingredient Declaration

Cherry Filling (20%) [Cherries (30%), Water, Cherry Puree (20%), Sugar, Modified Maize Starch, Lemon Juice, Gelling Agent (Pectin), Natural Flavouring], Sugar, **WHEAT** Flour (with Calcium Carbonate, Niacin, Iron, Thiamin), Vegetable Margarine [Palm Oil, Rapeseed Oil, Water, Salt, Emulsifier (E471), Natural Flavouring], Pasteurised Free Range **EGG**, **ALMONDS** (9%), Salted Butter [Butter (**MILK**), Salt], Cornflour, Natural Flavouring.

ALLERGENS

Product Contains:

Celery/Celery	No	Mustard	No
Cereals Containing Gluten	Yes	Nuts (Tree)	Yes
Barley	No	Almond nuts	Yes
Oats	No	Brazil nuts	May Contain
Rye	No	Cashew nuts	May Contain
Wheat (including Spelt and Khorasan)	Yes	Hazelnuts	May Contain
Gluten content <20ppm	No	Macadamia (Queensland) nuts	May Contain
Crustacea	No	Pecan nuts	May Contain
Eggs	Yes	Pistachio nuts	May Contain
Fish	No	Walnuts	May Contain
Lupin	No	Peanuts	No
Milk	Yes	Sesame Seeds	No
Molluscs	No	Soybeans	No
		Sulphur Dioxide and Sulphites	No

Risk Source:

Additional Allergen Information

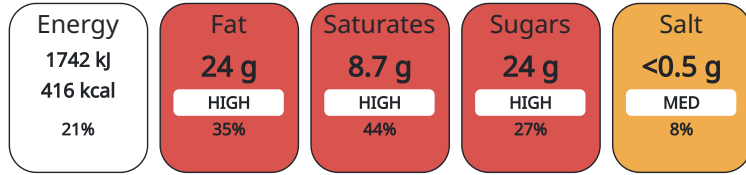
For allergens, including cereals containing gluten, see ingredients in BOLD.

DIET SUITABILITY

Suitable for Coeliacs	No	Halal Diet	No
Kosher Diet	No	Vegetarian Diet	Suitable for
Vegan Diet	No		

NUTRITIONAL INFORMATION

Each 100g/ml portion contains:



of your reference intake.

Typical values per 100g/ml : Energy 416kcal / 1742kJ

Nutrient	per 100g/ml	RI per 100g/ml	per 87g/ml serving	RI per 87g/ml serving
Energy (kJ)	1742 kJ	21%	1515.54	18%
Energy (kcal)	416 kcal	21%	361.92	18%
Fat	24.4 g	35%	21.23 g	30%
of which Saturates	8.7 g	44%	7.57 g	38%
Carbohydrate	42.7 g	16%	37.15 g	14%
of which Sugars	24.3 g	27%	21.14 g	23%
Fibre	1.9 g		1.65 g	
Protein	5.6 g	11%	4.87 g	10%
Salt	0.48 g	8%	0.42 g	7%

Serving Size 87 g

HANDLING & STORAGE INFORMATION

Directions For Use

Defrost at room temperature, in the plastic wrapper, for 2 hours. Please re-cut around the portions before removing from the tray. Once defrosted store in a cool place, in an airtight container. Do not refreeze once defrosted. Consume within 5 days.

Storage Instructions

Keep frozen, store at -18°C or below.

ORIGIN

Product Country of Origin United Kingdom

CONTACT INFORMATION

Address

The Handmade Cake Co.
The Bakery
Gardner Road
SL6 7TU
Maidenhead
Berkshire
United Kingdom

B.Kowalski@mdesserts.com
01628 770908

Technical

Technical Team
Maidenhead.Technical@mdesserts.com
01628 770908 Ext. 1052

Complaints

Technical Team
Maidenhead.Technical@mdesserts.com
01628 770908 Ext. 1052

The information on the [Erudus System](#) has been supplied by the manufacturers of the products and, whilst the owners of the Erudus System take steps to ensure the information is regularly updated, they give no warranty and no guarantee that the information is accurate. Product information and ingredients may change, please always read product labels carefully in addition to using the information provided by Erudus.

We do not accept liability for any inaccuracies or incorrect information contained on this site.
Please visit <http://www.erudus.com/terms-and-conditions> for full terms and conditions.