

GF Brie & Red Onion Tarts 180g (1 x 10)

Gf Brie & Red Onion Tarts 180g (1 X 10)

PRODUCT DESCRIPTION

Gluten-free cheddar and chive pastry tart, filled with a brie and cheddar sauce topped with red onion compôte. Suitable for vegetarians and coeliacs. Please note: this product may be eaten cold from defrost but for maximum product satisfaction and performance we recommend serving hot. (1 x 10)

Brand	Central Foods Group Limited
Manufacturer Product Code	MS1672
Product Type	Food
Product Category	Pies, Pizza, Sausages Rolls, Savouries
Storage Type	Frozen
Erudus ID	86a2aa453b6e4d29a0efa86b07f5dbd2
Specification Type	Legacy



Outer Case GTIN

5060062472936



INGREDIENTS

Ingredient Declaration
Water, Gluten-Free Self Raising Flour (Flour Blend (Rice, Potato, Tapioca, Maize, Buckwheat), Raising Agents (Monocalcium Phosphate, Sodium Bicarbonate), Thickener (Xanthan Gum)), Single Cream (**MILK**), Red Onion (15%), Cheddar Cheese (10%) (**MILK**) (Contains Potato Starch), Brie Cheese (9%) (**MILK**), Gluten-Free Vegetarian Suet (Palm Oil, Sunflower Oil, Rice Flour), Unsalted Butter (**MILK**), Modified Maize Starch, Muscovado Sugar (Cane Sugar, Cane Molasses), Apple Cider Vinegar, Pomace Olive Oil Blend (Pomace Olive Oil, Rapeseed Oil), Powdered Cheese Stock (Water, Cheese (**MILK**), Salt, Yeast Extract), Salt, Chives, Raising Agent (Xanthan Gum), Black Pepper, Rosemary.

ALLERGENS

Product Contains:

Celery/Celeriac	No
Cereals Containing Gluten	No
Barley	No
Oats	No
Rye	No
Wheat (including Spelt and Khorasan)	No
Gluten content <20ppm	Yes
Crustacea	No
Eggs	No
Fish	No
Lupin	No
Milk	Yes
Molluscs	No

Mustard	No
Nuts (Tree)	May Contain
Almond nuts	May Contain
Brazil nuts	No
Cashew nuts	May Contain
Hazelnuts	May Contain
Macadamia (Queensland) nuts	No
Pecan nuts	May Contain
Pistachio nuts	May Contain
Walnuts	May Contain
Peanuts	No
Sesame Seeds	No
Soybeans	No
Sulphur Dioxide and Sulphites	No

Risk Source:

DIET SUITABILITY

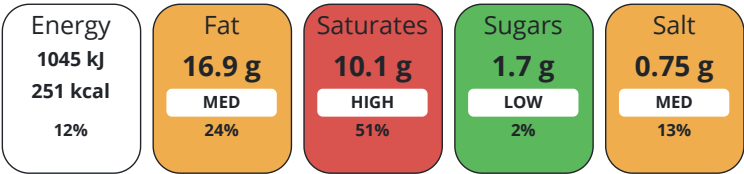
Additional Allergen Information

For allergens, see ingredients in CAPITALS.

Suitable for Coeliacs	Yes	Halal Diet	No
Kosher Diet	No	Vegetarian Diet	Suitable for
Vegan Diet	No		

NUTRITIONAL INFORMATION

Each 100g/ml portion contains:



of your reference intake.

Typical values per 100g/ml : Energy 251kcal / 1045kJ

Nutrient	per 100g/ml	RI per 100g/ml	per 180g/ml serving	RI per 180g/ml serving
Energy (kJ)	1045 kJ	12%	1881	22%
Energy (kcal)	251 kcal	13%	451.8	23%
Fat	16.9 g	24%	30.42 g	43%
of which Saturates	10.1 g	51%	18.18 g	91%
Carbohydrate	18.3 g	7%	32.94 g	13%
of which Sugars	1.7 g	2%	3.06 g	3%
Fibre	0.6 g		1.08 g	
Protein	6.1 g	12%	10.98 g	22%
Salt	0.75 g	13%	1.35 g	23%
Sodium	300 mg		540 mg	

Serving Size	180 g
--------------	-------

HANDLING & STORAGE INFORMATION

Directions For Use

From Frozen unless otherwise stated Oven: From Frozen: Remove foil and place product on a baking tray in the centre of a pre-heated oven at 200°C/180°C (fan)/Gas Mark 6 for approx. 25-30 mins. From defrost: Defrost in a refrigerator for approx. 12 hrs. Remove from foil and place product on a baking tray in the centre of a pre-heated oven at 200°C/180°C (fan)/Gas Mark 6 for approx. 12-15 mins. Ensure a core temperature of >75°C is achieved (or relevant national requirement), for at least 30 secs before serving. This product may be eaten cold from defrost but for maximum product satisfaction and performance we recommend serving hot. To maintain gluten-free integrity, please ensure all equipment used for gluten-free preparation, cooking and serving is clean or dedicated for gluten-free use only. Do NOT refreeze once defrosted.

Storage Instructions

Keep Frozen. Store at -18°C or below

ORIGIN

Product Country of Origin	United Kingdom
Additional Origin Details	United Kingdom

CONTACT
INFORMATION

Address

Central Foods Group Limited
Maple Court
Ash Lane
Collingtree
Northamptonshire
NN4 0NB
England

P: (Phone) 01604 858 522

Complaints Contact

Karen Wright
Customer Care Admin Assistant
kwright@centralfoods.co.uk

P: (Phone) 01604 878 299

Technical Contact

Chris Stobart
Technical Manager
technical@centralfoods.co.uk

P: (Phone) 01604 878 276

Commercial Contact

Oliver Sampson
Managing Director
osampson@centralfoods.co.uk

P: (Phone) 07715 073 273

The information on the [Erudus System](#) has been supplied by the manufacturers of the products and, whilst the owners of the Erudus System take steps to ensure the information is regularly updated, they give no warranty and no guarantee that the information is accurate. Product information and ingredients may change, please always read product labels carefully in addition to using the information provided by Erudus.

We do not accept liability for any inaccuracies or incorrect information contained on this site.
Please visit <http://www.erudus.com/terms-and-conditions> for full terms and conditions.