

780004

Kara Mini Sugared Ball Jam Doughnut 8 x 10, 50g

Kara Mini Sugared Ball Jam Doughnut 8 X 10, 50g

PRODUCT DESCRIPTION

A rich sweet dough, dusted with a delicate sugar coating and filled with an sweet apple and raspberry jam filling.

Brand	Kara Foodservice (Fletchers)
Manufacturer Product Code	F01144
Product Type	Food
Product Category	Bakery - General
Storage Type	Frozen
Erudus ID	b52fa2ac1bea41aaba6700dbf6805f13
Specification Type	Legacy



Outer Case GTIN 05010066111447



INGREDIENTS

Ingredient Declaration

Wheat Flour (**WHEAT**, Calcium Carbonate, Iron, Niacin, Thiamin), Water, Apple & Raspberry Jam (15%) (Glucose-Fructose Syrup, Apple Purée, Sugar, Raspberry Purée, Acidity Regulators (E330, E331(iii)), Colour (E163), Gelling Agent (E440(a)), Flavouring), Palm Oil, Rapeseed Oil, Sweet Dust (Dextrose, Cornflour, Palm Oil), Dextrose, Sugar, Raising Agents (E501, E450, E341), **WHEAT** Gluten, Yeast, Emulsifiers (E471, E481), Potassium Chloride, Salt, Stabiliser (E466), Flour Treatment Agent (E300).

ALLERGENS

Product Contains:

Celery/Celeriac	No	Mustard	No
Cereals Containing Gluten	Yes	Nuts (Tree)	No
Barley	No	Almond nuts	No
Oats	No	Brazil nuts	No
Rye	No	Cashew nuts	No
Wheat (including Spelt and Khorasan)	Yes	Hazelnuts	No
Gluten content <20ppm	No	Macadamia (Queensland) nuts	No
Crustacea	No	Pecan nuts	No
Eggs	May Contain	Pistachio nuts	No
Fish	No	Walnuts	No
Lupin	No	Peanuts	No
Milk	May Contain	Sesame Seeds	May Contain
Molluscs	No	Soybeans	May Contain
		Sulphur Dioxide and Sulphites	No

Risk Source:

Additional Allergen Information

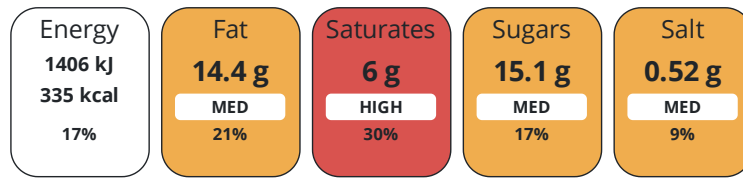
For allergens (including cereals containing gluten), see ingredients in bold. Also, may contain egg, milk, sesame and soya.

DIET
SUITABILITY

Suitable for Coeliacs	No	Halal Diet	No
Kosher Diet	No	Vegetarian Diet	Suitable for
Vegan Diet	No		

NUTRITIONAL
INFORMATION

Each 100g/ml portion contains:



of your reference intake.

Typical values per 100g/ml : Energy 335kcal / 1406kJ

Nutrient	per 100g/ml	RI per 100g/ml	per 50g/ml serving	RI per 50g/ml serving
Energy (kJ)	1406 kJ	17%	703 kJ	8%
Energy (kcal)	335 kcal	17%	167.5 kcal	8%
Fat	14.4 g	21%	7.2 g	10%
of which Saturates	6 g	30%	3 g	15%
of which Mono-unsaturates	5.7 g		2.9 g	
of which Polyunsaturates	2 g		1 g	
Carbohydrate	44.7 g	17%	22.4 g	9%
of which Sugars	15.1 g	17%	7.6 g	8%
of which Starch	29.6 g		14.8 g	
Fibre	2 g		1 g	
Protein	5.7 g	11%	2.9 g	6%
Salt	0.52 g	9%	0.3 g	5%
Sodium	208 mg		104 mg	

Serving Size 50 g

HANDLING &
STORAGE
INFORMATION

Directions For Use

To defrost: Keep frozen until use. Remove from case and leave in pack at room temperature for approximately 3 hours, or until fully defrosted. Once defrosted, store in a sealed pack in a cool, dry place away from direct sunlight and use within 1 day. Once defrosted do not refreeze.

Storage Instructions

Store Frozen at -18°C or below.

ORIGIN

Product Country of Origin/Place of United Kingdom

Provenance

Additional Origin Details

UK

CONTACT
INFORMATION

Address

Kara Foodservice (Fletchers)
Park Seventeen
Moss Lane
Whitefield
Manchester
M45 8FJ
England

P. (Phone) 0161 766 7471

The information on the [Erudus System](#) has been supplied by the manufacturers of the products and, whilst the owners of the Erudus System take steps to ensure the information is regularly updated, they give no warranty and no guarantee that the information is accurate. Product information and ingredients may change, please always read product labels carefully in addition to using the information provided by Erudus.

We do not accept liability for any inaccuracies or incorrect information contained on this site.
Please visit <http://www.erudus.com/terms-and-conditions> for full terms and conditions.