

Dr Oetker Professional Scotbloc White Chocolate Flavour Drops 3Kg

White Chocolate Flavour Drops 6x

PRODUCT DESCRIPTION

An all purpose bakers coating with a smooth texture of white chocolate appearance and flavour. A free flowing coating, formulated for enrobing work.

Brand	Dr. Oetker (UK) Ltd
Manufacturer Product Code	1-30-011553
Product Type	Food
Product Category	Confectionery
Storage Type	Ambient
Erudus ID	b0a7c6e5513b43cb9633f44a7eb5abd1
Specification Type	Legacy



Inner Component GTIN	5000254502690
Outer Case GTIN	05000254523442



INGREDIENTS

Ingredient Declaration
Sugar, vegetable oil (palm), whey powder (**MILK**), **WHEAT** flour (with calcium, iron, thiamin (B1), niacin (B3)), emulsifier (**SOYA** lecithins), flavouring.

ALLERGENS

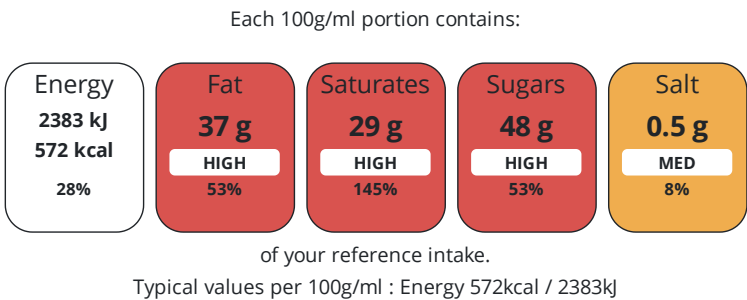
<i>Product Contains:</i>			
Celery/Celeriac	No	Mustard	No
Cereals Containing Gluten	Yes	Nuts (Tree)	No
Barley	No	Almond nuts	No
Oats	No	Brazil nuts	No
Rye	No	Cashew nuts	No
Wheat (including Spelt and Khorasan)	Yes	Hazelnuts	No
Gluten content <20ppm	No	Macadamia (Queensland) nuts	No
Crustacea	No	Pecan nuts	No
Eggs	No	Pistachio nuts	No
Fish	No	Walnuts	No
Lupin	No	Peanuts	No
Milk	Yes	Sesame Seeds	No
Molluscs	No	Soybeans	Yes
		Sulphur Dioxide and Sulphites	No

Additional Allergen Information
For allergens, including cereals containing gluten, see ingredients in BOLD.

DIET
SUITABILITY

Suitable for Coeliacs	No	Halal Diet	No
Kosher Diet	No	Vegetarian Diet	Suitable for
Vegan Diet	No		

NUTRITIONAL
INFORMATION



Nutrient	per 100g/ml	RI per 100g/ml
Energy (kJ)	2383 kJ	28%
Energy (kcal)	572 kcal	29%
Fat	37 g	53%
of which Saturates	29 g	145%
Carbohydrate	57 g	22%
of which Sugars	48 g	53%
Fibre	0.4 g	
Protein	2.8 g	6%
Salt	0.5 g	8%

HANDLING &
STORAGE
INFORMATION

Directions For Use

Directions • Ideal for melting and covering cakes, cookies and traybakes. • To melt on the hob, place drops in a dry heatproof bowl over a pan of hot (not boiling) water and stir until smooth. Take care not to get water into the melting chocolate coating. • To melt in the microwave (based on 850w) place drops in a microwave safe bowl and heat on medium (50%) power for 20-30 seconds then stir well. If required, heat in bursts of 10 seconds (50%) and stir until smooth. • Take care not to overheat when melting. • For best results when covering and moulding place finished items in a refrigerator until set **WARNING:** Chocolate may become very hot! Take care after heating.

Storage Instructions

Store in cool, dry and dark place away from strong odours..

ORIGIN

Product Country of Origin	United Kingdom
Additional Origin Details	

CONTACT
INFORMATION

EU
Address
Dr. Oetker (UK) Ltd
4600 Park Approach
Thorpe Park
Leeds
West Yorkshire
LS15 8GB
England

P. (Phone) 0113 823 1400

The information on the [Erudus System](#) has been supplied by the manufacturers of the products and, whilst the owners of the Erudus System take steps to ensure the information is regularly updated, they give no warranty and no guarantee that the information is accurate. Product information and ingredients may change, please always read product labels carefully in addition to using the information provided by Erudus.

We do not accept liability for any inaccuracies or incorrect information contained on this site.
Please visit <http://www.erudus.com/terms-and-conditions> for full terms and conditions.