

Changed Sep 19, 2025 00:00

Reviewed Sep 18, 2025 08:26

Erudus ID 178735c8b0ef4a1dba49aab0f5b0f163

Version 3.0

Status Published

This specification is published by [Erudus](#) for Caterfood Buying Group

14977

Caterfood Select Vegetable Lasagne 12 x 350g

Caterfood Select Vegetable Lasagne 12x350g

PRODUCT DESCRIPTION

Mixed vegetables in tomato and herb sauce, with layers of cooked pasta and topped with white sauce

Brand	Caterfood Buying Group
Label Own Label Code	C20123
Product Type	Food
Product Category	Ready Meals
Storage Type	Frozen
Erudus ID	178735c8b0ef4a1dba49aab0f5b0f163
Specification Type	Generic
Outer Case GTIN	5056750402552



INGREDIENTS

Ingredient Declaration

Vegetable Sauce (57%) (Chopped Tomatoes (33%), Mixed Vegetables (30%) (Onions, Red and Green Peppers, Aubergines, Courgettes, Mushrooms), Water, Modified Maize Starch, Rapeseed Oil, Tomato Purée, Basil, Vegetable Stock (Dried Glucose Syrup, Yeast Extract, Salt, Sugar, Chicory Extract, Onion Powder, Carrot Juice Powder, Tomato Powder, Natural Flavouring, Lovage, Rapeseed Oil), Brown Sugar (Cane Sugar, Sugar), Garlic Purée, Ground Black Pepper, Oregano. White Sauce (31%) (Water, Whole MILK Powder, Waxy Maize Starch, Cream Powder (MILK), Salt, Onion Powder, Modified Maize Starch, Yeast Extract, Ground CELERY, Ground Nutmeg, Ground White Pepper), Cooked Lasagne Pasta (11%) (Durum WHEAT Semolina, Water).

ALLERGENS

Product Contains:

Celery/Celeriac	Yes	Mustard	May Contain
Cereals Containing Gluten	Yes	Nuts (Tree)	May Contain
Barley	May Contain	Almond nuts	May Contain
Oats	May Contain	Brazil nuts	May Contain
Rye	May Contain	Cashew nuts	May Contain
Wheat (including Spelt and Khorasan)	Yes	Hazelnuts	May Contain
Crustacea	May Contain	Macadamia (Queensland) nuts	May Contain
Eggs	May Contain	Pecan nuts	May Contain
Fish	May Contain	Pistachio nuts	May Contain
Lupin	No	Walnuts	May Contain
Milk	Yes	Peanuts	May Contain
Molluscs	May Contain	Sesame Seeds	May Contain
		Soybeans	May Contain
		Sulphur Dioxide and Sulphites	May Contain

Risk Source:

Barley (Risk Source)	Raw Material	Oats (Risk Source)	Raw Material
Rye (Risk Source)	Raw Material	Crustacea (Risk Source)	Raw Material
Eggs (Risk Source)	Raw Material	Fish (Risk Source)	Raw Material
Molluscs (Risk Source)	Raw Material	Mustard (Risk Source)	Raw Material
Tree Nuts (Risk Source)	Raw Material	Almond nuts (Risk Source)	Raw Material
Brazil nuts (Risk Source)	Raw Material	Cashew nuts (Risk Source)	Raw Material
Hazelnuts (Risk Source)	Raw Material	Macadamia nuts (Risk Source)	Raw Material
Pecan nuts (Risk Source)	Raw Material	Pistachio nuts (Risk Source)	Raw Material
Walnuts (Risk Source)	Raw Material	Peanuts (Risk Source)	Raw Material
Sesame Seeds (Risk Source)	Raw Material	Soybeans (Risk Source)	Raw Material
Sulphur Dioxide and Sulphites (Risk Source)	Raw Material		

Allergen Statement On Pack

For allergens, see ingredients in CAPITALS. May also contain cereals containing Gluten (From Rye, Barley, Oats), Crustaceans, Egg, Fish, Peanut, Soya, Nuts, Mustard, Sesame and Molluscs and Sulphites.

SUPPLEMENTARY
INGREDIENT
INFORMATION

Palm Oil	No
Hydrogenated Vegetable Oil/Fat	No
GM Protein/DNA	No

ADDITIVES

Product Contains:

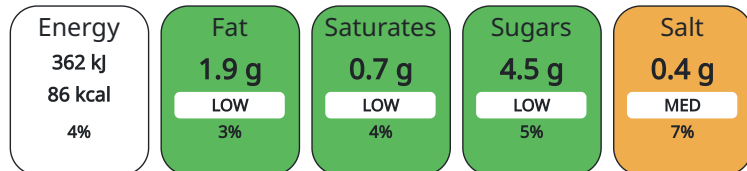
Artificial Antioxidants	No	Artificial Flavourings	No
Artificial Colours	No	Artificial Preservatives	No
Artificial Flavour Enhancers	No	Artificial Sweeteners	No

DIET SUITABILITY

Vegan Diet	No	Vegetarian Diet	Suitable for
Halal Diet	No	Kosher Diet	No

NUTRITIONAL
INFORMATION AS
SOLD

Each 100g/ml portion contains:



of your reference intake.

Typical values per 100g/ml : Energy 86kcal / 362kJ

Nutrient	per 100g	RI per 100g	per 350g serving	RI per 350g serving
Energy (kj)	362 kj	4%	1267 kj	15%
Energy (kcal)	86 kcal	4%	301 kcal	15%
Fat	1.9 g	3%	6.65 g	10%
of which Saturates	0.7 g	4%	2.45 g	12%
of which Mono-unsaturates	0.9 g		3.15 g	
of which Polyunsaturates	0.3 g		1.05 g	
Carbohydrate	14.1 g	5%	49.35 g	19%
of which Sugars	4.5 g	5%	15.75 g	18%
Fibre	1.1 g		3.85 g	
Protein	2.5 g	5%	8.75 g	18%
Salt	0.4 g	7%	1.4 g	23%
Sodium	176 mg		616 mg	
Serving Size	350 g			

Source of Nutritional Information Calculation from known/accepted datasets

Nutrient	per 100g	RI per 100g	per 350g serving	RI per 350g serving
Magnesium	0 mg		0 mg	

VITAMINS AND MINERALS AS SOLD

Fibre Type Fibre AOAC

SUPPLEMENTARY NUTRITIONAL INFORMATION

HFSS Status No

HFSS (HIGH IN FAT, SALT AND SUGAR)

HFSS Score 0

HANDLING & STORAGE INFORMATION

Directions For Use

Cooking Guidelines: All appliances vary the following are guidelines only. Microwave from Frozen (900 Watt/Category E). Remove film and transfer product to a suitable microwavable dish and cover with cling film. Heat on full power for 6 Minutes 30 seconds. Ensure food is piping hot throughout before serving. Do not reheat.

Storage Instructions

Keep frozen at -18c or below

Shelf Life from Time of Production 365 Days

ACCREDITATIONS/ CERTIFICATIONS/ ASSURANCE SCHEMES ORIGIN

BRCGS Certified

BRCGS Food Safety

Other Accreditation

Product Country of Origin United Kingdom

Additional Origin Details

Produced in Wales

Origin of the Primary Ingredient China, Greece

PRODUCT CHARACTERISTICS

Standards Testing

Do you undertake trend analysis of microbiological results? Yes

Is shelf life testing undertaken? No

Commercially Sterile No

Microbiological Standards

Organism	Description	Frequency	Target	Maximum	Sample (g or ml)
Enterobacteriaceae (cfu/g or ml)		Every Batch	<100	10000	100

Organism	Description	Frequency	Target	Maximum	Sample (g or ml)
E. Coli (cfu/g or ml)		Every Batch	<10	100	100
Staphylococcus Aureus (cfu/g or ml)		Every Batch	<20	10000	100
Salmonella (cfu/g or ml)		Every Batch	=0	0	25
Listeria Monocytogenes (cfu/g or ml)		Every Batch	=0	0	25
Clostridium Perfringens (cfu/g or ml)		Every Batch	<10	100	100
Bacillus Cereus (cfu/g or ml)		Every Batch	<20	10000	100

ORGANOLEPTICS

Appearance

Top is a layer of creamy white sauce, appears thick in consistency, evenly spread. Layers of flat, wide pasta sheets alternated with a vegetable ratatouille, a red tomato sauce, with aubergine, courgette, peppers and mushrooms. Medium/thick consistency.

Aroma

Complex blend of mixed vegetables with a tomato and herby note.

Taste

Savoury notes from the vegetables with tomato and herby notes especially oregano from the sauce. White pasta has a starchy mild neutral notes. Sauce has a salty and mild notes.

Texture

Vegetables are low/medium resistance that breakdown easily. White sauce is thick and coats the mouth. Medium consistency.

Pasta sheets are medium to high resistance that breakdown easily.

HAZARD CONTROLS

	Metal Detection	Yes		
CONFIGURATION	Case Configuration		Inner Pack Configuration	
	Total Quantity of Inner Components in Outer Case	12 Units	Is Inner Pack Splittable?	No
	Total Quantity of Inner Packs in Outer Case	12 Units		
	Is the Outer Case Splittable?	No		
PRODUCT WEIGHTS	Inner Component		Inner Pack	
	Variable Weight Consumer Item	No	Inner Pack Gross Weight	368 g
	Inner Component Weight	350 g	Inner Pack Net Weight	350 g
	e mark	No		
PRODUCT DIMENSIONS	Outer Case			
	Outer Case Gross Weight	4.58 kg		
	Outer Case Net Weight	4.2 kg		
	Inner Component		Inner Pack	
	Inner Component Depth	164 mm	Inner Pack Depth	164 mm
	Inner Component Width	123 mm	Inner Pack Width	123 mm
	Inner Component Height	35 mm	Inner Pack Height	35 mm
	Outer Case			
Outer Case Depth	320 mm			
Outer Case Width	240 mm			
Outer Case Height	105 mm			

PALLET INFORMATION

Quantity of Cases Per Pallet Layer	14 Cases	Pallet Type	Euro Pallet
Quantity of Layers Per Pallet	12 Layers	Pallet Height	1.4 MTR
Quantity of Cases Per Pallet	168 Cases	Pallet Gross Weight	798.41 kg

PACKAGING

Inner Component Packaging

Type	Materials	Weight	Recycled Plastic %	Recyclable	Returnable	Composite
Poly Treated PET/PE	Plastic	18 g	30.00 %			

Outer Case Packaging

Type	Materials	Weight	Recycled Plastic %	Recyclable	Returnable	Composite
Case	Plastic	1 g	- %			
Case	Paper/Cardboard	162 g	- %			

Transport Packaging

Type	Materials	Weight	Recycled Plastic %	Recyclable	Returnable	Composite
Other	Plastic	428 g	- %			
Other	Wood	28000 g	- %			

MARKETING INFORMATION

Marketing Description

Mixed vegetables in tomato and herb sauce, with layers of cooked pasta and topped with white sauce

SAFETY & WARNINGS

OTHER INFORMATION

Intrastat/Taric Code	0	Identification/Health Marks	UK RX014
		Value Added Tax Rate	0%

CONTACT INFORMATION

ADDRESS

Caterfood Buying Group
 BFS Group Ltd
 814 Leigh Road
 Slough
 Berkshire
 SL1 4BD
 United Kingdom

The information on the [Erudus System](#) has been supplied by the manufacturers of the products and, whilst the owners of the Erudus System take steps to ensure the information is regularly updated, they give no warranty and no guarantee that the information is accurate. Product information and ingredients may change, please always read product labels carefully in addition to using the information provided by Erudus.

We do not accept liability for any inaccuracies or incorrect information contained on this site.
 Please visit <http://www.erudus.com/terms-and-conditions> for full terms and conditions.