

Changed Dec 23, 2025 10:12

Reviewed Dec 23, 2025 10:12

Erudus ID cb3cd0effdad49e297cd532337c7828e

Version 3.0

Status Published

Christmas Mincemeat Pie Slice x 15ptn

Christmas Mincemeat Pie Slice

PRODUCT DESCRIPTION

Shortbread pastry base layered with sweet mincemeat and topped with shortbread pastry stars with dusting sugar

Brand	CAKE
Manufacturer	Lomond Fine Foods Ltd
Manufacturer Product Code	14437
Product Type	Food
Product Category	Traybake
Storage Type	Frozen
Erudus ID	cb3cd0effdad49e297cd532337c7828e
Specification Type	Bakery Products



Inner Component GTIN 5060268092044

Outer Case GTIN 15060268092041



INGREDIENTS

Ingredient Declaration

Wheat Flour (**WHEAT** Flour, Calcium Carbonate, Iron, Niacin, Thiamin), Sultanas (Sultanas, Sunflower Oil), Currants (Currants, Sunflower Oil), Butter (Cream (**MILK**), Salt, Water), Mincemeat (Sugar, Vine Fruit (Sultanas, Glazing agent (Cotton Oil, Sunflower Oil)), Apples, Apple Puree, Water, Vegetable Suet (Palm Oil, Sunflower Oil, Rice Flour), Starch, Cut Mixed Peel (Orange Peel, Glucose-Fructose syrup, Lemon Peel, Sugar, Acidity Regulator (Citric Acid)), Mixed Spice (Coriander, Cassia Cinnamon, Ginger, Cardamom, Cloves, Fennel, Nutmeg), Acetic Acid, Colour (Plain Caramel), Preservative (Potassium Sorbate), Flavour, Cinnamon), Water, Caster Sugar, Invert Sugar syrup, Light Brown Sugar, Mixed Spice (Cassia, Cinnamon, Coriander, Ginger, Allspice, Clove, Nutmeg), Dusting Sugar (Dextrose, Cornflour, Palm Oil)

ALLERGENS

Product Contains:

Celery/Celery	No	Mustard	No
Cereals Containing Gluten	Yes	Nuts (Tree)	May Contain
Barley	May Contain	Almond nuts	May Contain
Oats	May Contain	Brazil nuts	No
Rye	No	Cashew nuts	No
Wheat (including Spelt and Khorasan)	Yes	Hazelnuts	May Contain
Crustacea	No	Macadamia (Queensland) nuts	No
Eggs	May Contain	Pecan nuts	No
Fish	No	Pistachio nuts	May Contain
Lupin	No	Walnuts	May Contain
Milk	Yes	Peanuts	No
Molluscs	No	Sesame Seeds	No
		Soybeans	May Contain
		Sulphur Dioxide and Sulphites	May Contain

Risk Source:

Barley (Risk Source)	Line	Oats (Risk Source)	Line
Eggs (Risk Source)	Line	Tree Nuts (Risk Source)	Line
Almond nuts (Risk Source)	Line	Hazelnuts (Risk Source)	Line
Pistachio nuts (Risk Source)	Line	Walnuts (Risk Source)	Line
Soybeans (Risk Source)	Line	Sulphur Dioxide and Sulphites (Risk Source)	Line

Additional Allergen Information

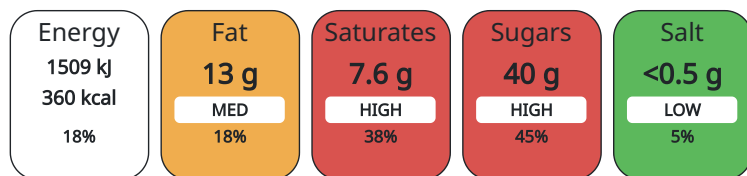
Allergy Advice: For allergens, including cereals containing gluten, see ingredients in bold. May also contain traces of oats, barley, egg, soya, sulphites and tree nuts

DIET SUITABILITY

Vegan Diet	No	Vegetarian Diet	Suitable for
Halal Diet	No	Kosher Diet	No

NUTRITIONAL INFORMATION AS SOLD

Each 100g/ml portion contains:



of your reference intake.

Typical values per 100g/ml : Energy 360kcal / 1509kJ

Nutrient	per 100g	RI per 100g
Energy (kJ)	1509 kJ	18%
Energy (kcal)	360 kcal	18%
Fat	12.5 g	18%
of which Saturates	7.6 g	38%
Carbohydrate	57.5 g	22%
of which Sugars	40.4 g	45%
Fibre	3.2 g	
Protein	3.4 g	7%
Salt	0.28 g	5%

HANDLING &
STORAGE
INFORMATION

Directions For Use

Keep frozen until ready to defrost

Storage Instructions

Storage: Store at -18°C or colder. Defrost for 6 - 8 hours before serving. Store unopened in a cool dry place for up to 90 days. Eat within 5 days of opening.

ORIGIN

Product Country of Origin

Scotland

Origin of the Primary Ingredient

United Kingdom

CONTACT
INFORMATION

Address

Lomond Fine Foods Ltd
75 Keppochhill Drive
70 Spiersbridge Road, Thornliebank, Glasgow, G46 7SN
G21 1HX
Springburn
Glasgow
Scotland

anne@lomond.lfs.com

0141 353 6777

The information on the [Erudus System](#) has been supplied by the manufacturers of the products and, whilst the owners of the Erudus System take steps to ensure the information is regularly updated, they give no warranty and no guarantee that the information is accurate. Product information and ingredients may change, please always read product labels carefully in addition to using the information provided by Erudus.

We do not accept liability for any inaccuracies or incorrect information contained on this site.
Please visit <http://www.erudus.com/terms-and-conditions> for full terms and conditions.