

Supplier's Product Code :  
 Product Added :  
 Last Updated by Supplier :  
 erudus id :

4677  
 14 April 2021  
 14 April 2021  
 23f4cf656ab44aff99ed3d426322cc69

The information on the [Erudus System](#) has been supplied by the manufacturers of the products and, whilst the owners of the Erudus System take steps to ensure the information is regularly updated, they give no warranty and no guarantee that the information is accurate. Product information and ingredients may change, please always read product labels carefully in addition to using the information provided by Erudus One.

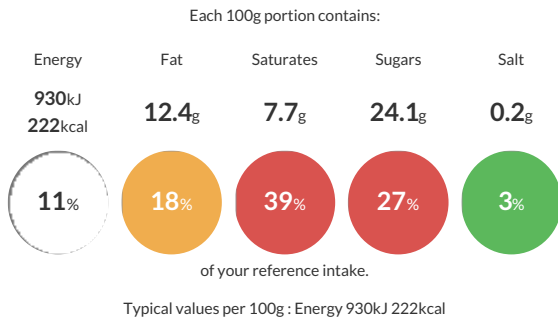
We do not accept liability for any inaccuracies or incorrect information contained on this site. Please visit <http://www.erudus.com/terms-and-conditions> for full terms and conditions.

## Dairy Toffee Crunch Ice Cream 4.75 Litres

Toffee Flavoured Dairy Ice Cream with Toffee Pieces

Traded Unit GTIN: **5030210003534** Internal GTIN: **5030210003534** Supplier : **New Forest Ice Cream** Suppliers Product Code : **4677**

### Reference Intake



### Nutritional Information

Typical Values	Per 100g
Energy	930kJ 222kCal
Carbohydrates	24.1g
of which sugars	24.1g
Fat	12.4g
of which saturates	7.7g
Fibre	0.1g
Protein	3.8g
Salt	0.2g

### Allergy Information

Key: **Contains** **May Contain**



**Allergen Statement**  
 May contain **EGG, GLUTEN**

### Dietary Information

Key: **Suitable for**



### Ingredients

Whole **MILK**, double cream (17%) [from **MILK**], sugar, toffee pieces (7%) [contain sugar; glucose syrup; non hydrogenated vegetable fat (shea, palm, sunflower), water, unsalted butter [from **MILK**], salt, emulsifier **SOYA** lecithin, colouring natural caramel, raising agent sodium bicarbonate.], skimmed **MILK** powder, dextrose, emulsifier mono-and diglycerides of fatty acids (vegetable origin), stabilisers sodium alginate, guar gum; natural flavouring (0.38%) [contains natural flavouring substances, monopropylene glycol], caramelised sugar syrup.