

Changed May 07, 2024 10:34

Reviewed May 07, 2024 10:34

Erudus ID d82e4772b25f4c1a93d927d8067d90fc

Version 2.0

Status Published

003022

# Rowntree's Fruit Pastilles Vegan Friendly Tube 32x48g

Colourful, Chewy Pastille Sweets Made With Fruit Juice 32x48g

## PRODUCT DESCRIPTION

Fruit Pastilles

Manufacturer Product Code	12558782
Product Type	Food
Product Category	Confectionery
Storage Type	Ambient
Erudus ID	d82e4772b25f4c1a93d927d8067d90fc
Specification Type	Generic

Inner Component GTIN	8445291194090
Outer Case GTIN	8445291194083



## INGREDIENTS

### Ingredient Declaration

Sugar, Glucose Syrup, Starch, Invert Sugar Syrup, Concentrated Fruit Juices (1.1%) (Apple, Blackcurrant, Strawberry, Orange, Lemon, Lime), Acids (Malic Acid, Citric Acid, Lactic Acid, Acetic Acid), Acidity Regulator (Trisodium Citrate), Plant and Vegetable Concentrates (Black) Carrot, Carrot, Hibiscus), Colours (Paprika Extract, Anthocyanins, Copper Complexes of Chlorophyllins, Carotenes, Curcumin), Flavouring

## ALLERGENS

Product Contains:

Celery/Celery	No	Mustard	No
Cereals Containing Gluten	No	Nuts (Tree)	No
Barley	No	Almond nuts	No
Oats	No	Brazil nuts	No
Rye	No	Cashew nuts	No
Wheat (including Spelt and Khorasan)	No	Hazelnuts	No
Crustacea	No	Macadamia (Queensland) nuts	No
Eggs	No	Pecan nuts	No
Fish	No	Pistachio nuts	No
Lupin	No	Walnuts	No
Milk	No	Peanuts	No
Molluscs	No	Sesame Seeds	No
		Soybeans	No
		Sulphur Dioxide and Sulphites	No

### Additional Allergen Information

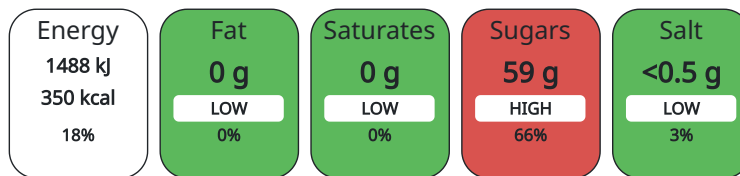
No Allergens present

## DIET SUITABILITY

<b>Vegan Diet</b>	Suitable for	<b>Vegetarian Diet</b>	Suitable for
<b>Halal Diet</b>	No	<b>Kosher Diet</b>	No

## NUTRITIONAL INFORMATION AS SOLD

Each 100g/ml portion contains:



of your reference intake.

Typical values per 100g/ml : Energy 350kcal / 1488kj

Nutrient	per 100g	RI per 100g
Energy (kj)	1488 kj	18%
Energy (kcal)	350 kcal	18%
Fat	0 g	
of which Saturates	0 g	
Carbohydrate	86.3 g	33%
of which Sugars	59.4 g	66%
Fibre	0 g	
Protein	0.1 g	0%
Salt	0.19 g	3%

Serving Size Description 7 sweets

Source of Nutritional Information Calculation based on known values of ingredients

## HANDLING &amp; STORAGE INFORMATION

## Directions For Use

Ready To Eat

## Storage Instructions

Store cool and dry

## ORIGIN

Product Country of Origin Czech Republic

## Origin of the Primary Ingredient

## MARKETING INFORMATION

## Marketing Description

Our classic, colorful, chewy pastille sweets are made with fruit juice 5 colorful flavors - Blackcurrant, lemon, strawberry, lime and orange. Vegan Friendly No artificial colors, flavors or preservatives No artificial colours, flavours or preservatives

## CONTACT INFORMATION

## Address

Nestle UK  
Nestlé UK Ltd  
PO Box 207  
YO91 1WS  
York  
England

helen.brewer@uk.nestle.com  
0800 00 00 30 (UK)

## Complaints

consumer.services@uk.nestle.com  
0800 00 00 30 (UK)

The information on the [Erudus System](#) has been supplied by the manufacturers of the products and, whilst the owners of the Erudus System take steps to ensure the information is regularly updated, they give no warranty and no guarantee that the information is accurate. Product information and ingredients may change, please always read product labels carefully in addition to using the information provided by Erudus.

We do not accept liability for any inaccuracies or incorrect information contained on this site.  
Please visit <http://www.erudus.com/terms-and-conditions> for full terms and conditions.