

Changed Oct 16, 2024 12:34

Reviewed Oct 16, 2024 12:34

Erudus ID 4ee8cb7338f246e3972792ab50cf1d9e

Version 3.0

Status Published

HONEYCOMB TIFFIN (1 x 12 ptn)

Honeycomb Tiffin 1x1.2kg

PRODUCT DESCRIPTION

Crushed digestive biscuits, toffee pieces and honeycomb, bound together in a milk chocolate toffee fudge mixture, topped with milk chocolate and sprinkled with honeycomb and toffee pieces..

Manufacturer Product Code	074509
Product Type	Food
Product Category	Traybake
Storage Type	Frozen
Erudus ID	4ee8cb7338f246e3972792ab50cf1d9e
Specification Type	Bakery Products



Outer Case GTIN 5060044074509



INGREDIENTS

Ingredient Declaration

Digestive Biscuits [WHEAT Flour (with Calcium Carbonate, Iron, Niacin, Thiamin), Palm Oil, Sugar, Wholemeal WHEAT Flour, Partially Inverted Sugar Syrup, Raising Agents (E500, E503), Salt], Milk Chocolate (26%) [Sugar, Cocoa Butter, Whole MILK Powder, Cocoa Mass, Emulsifier (SOYA Lecithin), Natural Vanilla Flavouring], Sweetened Condensed MILK, Vegetable Margarine [Palm Oil, Rapeseed Oil, Water, Salt, Emulsifier (E471), Natural Flavouring], Honeycomb Pieces (2.5%) [Sugar, Glucose Syrup, Water, Raising Agent (Bicarbonate of Soda), Shea Kernel Oil, Palm Oil, Emulsifier (E322)], Toffee Pieces (2.3%) [Sugar, Glucose Syrup, Sweetened Condensed Milk (Whole MILK, Sugar), Palm Oil, Butter Oil (MILK), Natural Flavouring, Coconut Oil, Glazing Agent (Carnauba Wax)], Toffee Sauce (2.1%) [Glucose Syrup, Invert Sugar Syrup, Sweetened Condensed Skimmed MILK, Sugar, Butter Oil (MILK), Water, Colour (Caramel), Stabiliser (Pectin), Natural Flavouring], Toffee Flavouring (0.1%).

ALLERGENS

Product Contains:

Celery/Celeryiac	No	Mustard	No
Cereals Containing Gluten	Yes	Nuts (Tree)	May Contain
Barley	No	Almond nuts	May Contain
Oats	No	Brazil nuts	May Contain
Rye	No	Cashew nuts	May Contain
Wheat (including Spelt and Khorasan)	Yes	Hazelnuts	May Contain
Crustacea	No	Macadamia (Queensland) nuts	May Contain
Eggs	May Contain	Pecan nuts	May Contain
Fish	No	Pistachio nuts	May Contain
Lupin	No	Walnuts	May Contain
Milk	Yes	Peanuts	No
Molluscs	No	Sesame Seeds	No
		Soybeans	Yes
		Sulphur Dioxide and Sulphites	No

Risk Source:

Eggs (Risk Source)	Line	Tree Nuts (Risk Source)	Line
Almond nuts (Risk Source)	Line	Brazil nuts (Risk Source)	Line
Cashew nuts (Risk Source)	Line	Hazelnuts (Risk Source)	Line
Macadamia nuts (Risk Source)	Line	Pecan nuts (Risk Source)	Line
Pistachio nuts (Risk Source)	Line	Walnuts (Risk Source)	Line

Additional Allergen Information

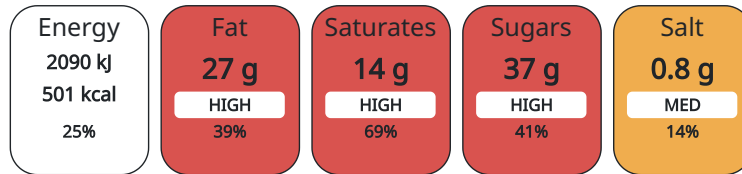
For allergens, including cereals containing gluten, see ingredient in BOLD. This product may contain traces of nuts and eggs as it has been made in a bakery that uses these ingredients.

DIET SUITABILITY

Vegan Diet	No	Vegetarian Diet	Suitable for
Halal Diet	No	Kosher Diet	No

NUTRITIONAL INFORMATION AS SOLD

Each 100g/ml portion contains:



of your reference intake.

Typical values per 100g/ml : Energy 501kcal / 2090kj

Nutrient	per 100g	RI per 100g	per 83g serving	RI per 83g serving
Energy (kJ)	2090 kJ	25%	1734.7	21%
Energy (kcal)	501 kcal	25%	415.83	21%
Fat	27 g	39%	22.41 g	32%
of which Saturates	13.8 g	69%	11.45 g	57%
Carbohydrate	56.7 g	22%	47.06 g	18%
of which Sugars	37 g	41%	30.71 g	34%
Fibre	2.1 g		1.74 g	
Protein	6.3 g	13%	5.23 g	10%
Salt	0.82 g	14%	0.68 g	11%

Serving Size	83 g
--------------	------

HANDLING & STORAGE INFORMATION

Directions For Use

Defrost at room temperature, in the plastic wrapper, for 2 hours. Please re-cut around the portions before removing from the tray. Once defrosted store in a cool place, in an airtight container. Do not refreeze once defrosted. Consume within 5 days.

Storage Instructions

Keep frozen, store at -18°C or below

ORIGIN

Product Country of Origin	United Kingdom
---------------------------	----------------

Additional Origin Details

-

Origin of the Primary Ingredient

CONTACT
INFORMATION

Address

The Handmade Cake Co.
The Bakery
Gardner Road
SL6 7TU
Maidenhead
Berkshire
United Kingdom

B.Kowalski@mdesserts.com
01628 770908

Technical

Technical Team
Maidenhead.Technical@mdesserts.com
01628 770908 Ext. 1052

Complaints

Technical Team
Maidenhead.Technical@mdesserts.com
01628 770908 Ext. 1052

The information on the [Erudus System](#) has been supplied by the manufacturers of the products and, whilst the owners of the Erudus System take steps to ensure the information is regularly updated, they give no warranty and no guarantee that the information is accurate. Product information and ingredients may change, please always read product labels carefully in addition to using the information provided by Erudus.

We do not accept liability for any inaccuracies or incorrect information contained on this site.
Please visit <http://www.erudus.com/terms-and-conditions> for full terms and conditions.