

100% Ham Joint 1x3.5kg Ham 1/2

Ham

PRODUCT DESCRIPTION

100% Ham Joint 1x3.5kg Ham 1/2

| | |
|---------------------------|--------------------------------------|
| Brand | Midland Chilled Foods (Granarolo UK) |
| Manufacturer Product Code | C406BE |
| Product Type | Food |
| Product Category | Other Meat Products |
| Storage Type | Chilled |
| Erudus ID | 04e59a889d3749f1b304eaa2c8dde645 |
| Specification Type | Meat |
| Inner Pack GTIN | 5060092260800 |

INGREDIENTS

Ingredient Declaration

Pork leg, Salt, Dextrose Emulsifying Salts E460 Diphosphates, E451 Triphosphates, Antioxidant E301 Sodium Ascorbate, Preservative E250 Sodium Nitrite.

ALLERGENS

Product Contains:

| | |
|--------------------------------------|----|
| Celery/Celeriac | No |
| Cereals Containing Gluten | No |
| Barley | No |
| Oats | No |
| Rye | No |
| Wheat (including Spelt and Khorasan) | No |
| Crustacea | No |
| Eggs | No |
| Fish | No |
| Lupin | No |
| Milk | No |
| Molluscs | No |

| | |
|-------------------------------|----|
| Mustard | No |
| Nuts (Tree) | No |
| Almond nuts | No |
| Brazil nuts | No |
| Cashew nuts | No |
| Hazelnuts | No |
| Macadamia (Queensland) nuts | No |
| Pecan nuts | No |
| Pistachio nuts | No |
| Walnuts | No |
| Peanuts | No |
| Sesame Seeds | No |
| Soybeans | No |
| Sulphur Dioxide and Sulphites | No |

Additional Allergen Information

NONE

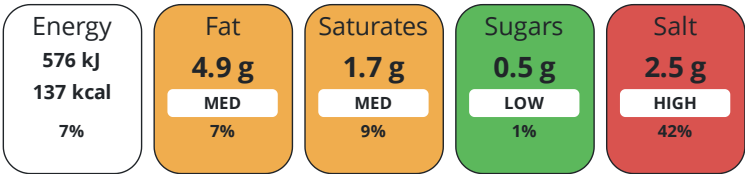
DIET SUITABILITY

| | |
|------------|----|
| Halal Diet | No |
|------------|----|

| | |
|-------------|----|
| Kosher Diet | No |
|-------------|----|

NUTRITIONAL INFORMATION

Each 100g/ml portion contains:



of your reference intake.

Typical values per 100g/ml : Energy 137kcal / 576kJ

| Nutrient | per 100g | RI per 100g |
|--------------------|----------|-------------|
| Energy (kJ) | 576 kJ | 7% |
| Energy (kcal) | 137 kcal | 7% |
| Fat | 4.9 g | 7% |
| of which Saturates | 1.7 g | 9% |
| Carbohydrate | 0.5 g | 0% |
| of which Sugars | 0.5 g | 1% |
| Protein | 21 g | 42% |
| Salt | 2.5 g | 42% |

HANDLING &
STORAGE
INFORMATION

| | |
|-----------------------------|--|
| Directions For Use | Keep refrigerated at 0-50C Use within 3 days of opening, do not exceed use by date Products in trays packed in modified atmosphere |
| Storage Instructions | Store in chilled temperature |

ORIGIN

| | |
|----------------------------------|----------------|
| Product Country of Origin | United Kingdom |
|----------------------------------|----------------|

CONTACT
INFORMATION

| | |
|---|--------------------------------|
| Origin of the Primary Ingredient | |
| Address | Technical Contact |
| Midland Chilled Foods (Granarolo UK) | Patrizia Mattara |
| Strings Lane | QA Manager |
| Willenhall | technical@midlandchilled.co.uk |
| Wolverhampton | |
| WY13 1LX | <u>P. (Phone)</u> 01902 366004 |
| England | |
| <u>P. (Phone)</u> 01902 366004 | |

The information on the [Erudus System](#) has been supplied by the manufacturers of the products and, whilst the owners of the Erudus System take steps to ensure the information is regularly updated, they give no warranty and no guarantee that the information is accurate. Product information and ingredients may change, please always read product labels carefully in addition to using the information provided by Erudus.

We do not accept liability for any inaccuracies or incorrect information contained on this site.
Please visit <http://www.erudus.com/terms-and-conditions> for full terms and conditions.