

Fanta Fruit Twist 500ml x12

Fanta Fruit Twist 12x0.53kg

PRODUCT DESCRIPTION

Fanta Fruit Twist 500ml x12 PET

Manufacturer Product Code	423165
Product Type	Drink
Product Category	Drinks - General
Storage Type	Ambient
Erudus ID	bde6ee6e1d3547899cf49c22751e3a03
Specification Type	Legacy

Inner Component GTIN	00000054493957
Outer Case GTIN	05017726135874



INGREDIENTS

Ingredient Declaration

Carbonated Water, Sugar, Fruit Juices From Concentrate 4.4% (Orange 3.4%, Peach 0.5%, Apple 0.4%, Passion Fruit 0.1%), Vegetable And Plant Concentrates (Carrot, Safflower), Acids (Citric Acid, Malic Acid), Sweeteners (Acesulfame K, Aspartame), Preservative (Potassium Sorbate), Natural Flavouring, Stabilisers (Glycerol Esters Of Wood Rosins, Guar Gum).

ALLERGENS

Product Contains:

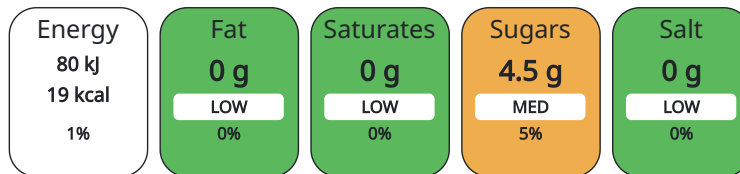
Celery/Celeriac	No	Mustard	No
Cereals Containing Gluten	No	Nuts (Tree)	No
Barley	No	Almond nuts	No
Oats	No	Brazil nuts	No
Rye	No	Cashew nuts	No
Wheat (including Spelt and Khorasan)	No	Hazelnuts	No
Crustacea	No	Macadamia (Queensland) nuts	No
Eggs	No	Pecan nuts	No
Fish	No	Pistachio nuts	No
Lupin	No	Walnuts	No
Milk	No	Peanuts	No
Molluscs	No	Sesame Seeds	No
		Soybeans	No
		Sulphur Dioxide and Sulphites	No

DIET SUITABILITY

Suitable for Coeliacs	Yes	Halal Diet	Suitable for
Kosher Diet	Suitable for	Vegetarian Diet	Suitable for
Vegan Diet	Suitable for		

NUTRITIONAL
INFORMATION

Each 100g/ml portion contains:



of your reference intake.

Typical values per 100g/ml : Energy 19kcal / 80kJ

Nutrient	per 100g/ml	RI per 100g/ml
Energy (kJ)	80 kJ	1%
Energy (kcal)	19 kcal	1%
Fat	0 g	
of which Saturates	0 g	
Carbohydrate	4.5 g	2%
of which Sugars	4.5 g	5%
Protein	0 g	
Salt	0 g	

HANDLING &
STORAGE
INFORMATION

Directions For Use

Best served chilled.

Storage Instructions

Store in a cool dry place.

ORIGIN

Product Country of Origin Great Britain

CONTACT
INFORMATION

Address

Coca-Cola
Coca-Cola Europacific Partners Great Britain Limited
Pemberton House, Bakers Road
UB8 1EZ
Uxbridge
United Kingdom

contact@ccep.com
08081000000

Technical

Data Queries
npidataexchange@ccep.com

The information on the [Erudus System](#) has been supplied by the manufacturers of the products and, whilst the owners of the Erudus System take steps to ensure the information is regularly updated, they give no warranty and no guarantee that the information is accurate. Product information and ingredients may change, please always read product labels carefully in addition to using the information provided by Erudus.

We do not accept liability for any inaccuracies or incorrect information contained on this site.
Please visit <http://www.erudus.com/terms-and-conditions> for full terms and conditions.