

Changed Jul 21, 2025 09:56

Reviewed Jul 21, 2025 09:56

Erudus ID d11e7661ca57485ca62b4a30122f5b25

Version 2.0

Status Published

Apple & Almond Slices 3x20

Apple & Almond Slices 3x2492g

PRODUCT DESCRIPTION

Pound cake with fresh apple slices and almond slivers, decorated with jelly.

Manufacturer Product Code	281301
Product Type	Food
Product Category	Desserts
Storage Type	Frozen
Erudus ID	d11e7661ca57485ca62b4a30122f5b25
Specification Type	Generic

Inner Component GTIN	4002197092505
Outer Case GTIN	4002197992508



INGREDIENTS

Ingredient Declaration

41.1 % apples, vegetable oil (rape), sugar, whole **egg**, water, starch (**wheat**), wheat flour, 2.2 % **almonds**, glucose-fructose syrup, modified starch, raising agents (E 341, E 500, E 450), skimmed **milk** powder, natural flavouring (starch (**wheat**)), salt, thickeners (E 407, E 410), acidity regulator (E 331), acid (E 330), dextrose.

ALLERGENS

Product Contains:

Celery/Celery	No
Cereals Containing Gluten	Yes
Barley	No
Oats	No
Rye	No
Wheat (including Spelt and Khorasan)	Yes
Crustacea	No
Eggs	Yes
Fish	No
Lupin	May Contain
Milk	Yes
Molluscs	No

Mustard	No
Nuts (Tree)	Yes
Almond nuts	Yes
Brazil nuts	May Contain
Cashew nuts	May Contain
Hazelnuts	May Contain
Macadamia (Queensland) nuts	May Contain
Pecan nuts	May Contain
Pistachio nuts	May Contain
Walnuts	May Contain
Peanuts	May Contain
Sesame Seeds	No
Soybeans	May Contain
Sulphur Dioxide and Sulphites	No

Risk Source:

Lupin (Risk Source)	Line
Cashew nuts (Risk Source)	Raw Material
Macadamia nuts (Risk Source)	Raw Material
Pistachio nuts (Risk Source)	Raw Material
Peanuts (Risk Source)	Raw Material

Brazil nuts (Risk Source)	Raw Material
Hazelnuts (Risk Source)	Raw Material
Pecan nuts (Risk Source)	Raw Material
Walnuts (Risk Source)	Raw Material
Soybeans (Risk Source)	Line

Additional Allergen Information

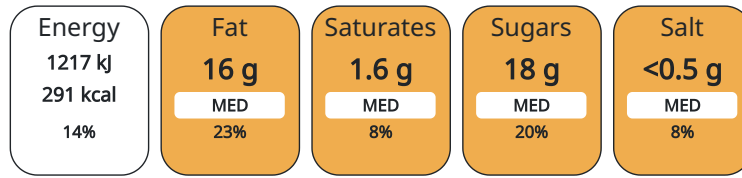
May contain traces of peanuts, other nuts, soy and lupin.

DIET SUITABILITY

Vegan Diet	No	Vegetarian Diet	Suitable for
Halal Diet	No	Kosher Diet	No

NUTRITIONAL INFORMATION AS SOLD

Each 100g/ml portion contains:



of your reference intake.

Typical values per 100g/ml : Energy 291kcal / 1217kJ

Nutrient	per 100g	RI per 100g
Energy (kJ)	1217 kJ	14%
Energy (kcal)	291 kcal	15%
Fat	16 g	23%
of which Saturates	1.6 g	8%
Carbohydrate	33 g	13%
of which Sugars	18 g	20%
Protein	2.9 g	6%
Salt	0.49 g	8%

HANDLING & STORAGE INFORMATION

Directions For Use

Remove from packaging in a frozen condition, defrost in a refrigerator (<= 8 °C). Defrost time approx. 12 hours. Keep product refrigerated and consume promptly: baked products: approx. 3-4 days, cream-based products: approx. 2 days, fruits tortes: approx. 1-2 days.

Storage Instructions

Keep frozen. Do not refreeze after thawing.

ORIGIN

Product Country of Origin Germany

Origin of the Primary Ingredient Germany

CONTACT INFORMATION

Address

Yearsley Food Ltd
Hareshill Road
OL10 2TP
Heywood
Lancs
England

technical@yearsley.co.uk
01706 694594

The information on the [Erudus System](#) has been supplied by the manufacturers of the products and, whilst the owners of the Erudus System take steps to ensure the information is regularly updated, they give no warranty and no guarantee that the information is accurate. Product information and ingredients may change, please always read product labels carefully in addition to using the information provided by Erudus.

We do not accept liability for any inaccuracies or incorrect information contained on this site.
Please visit <http://www.erudus.com/terms-and-conditions> for full terms and conditions.