

# Nacho Cheese Sauce 12 x 1L

Nacho Cheese Sauce 12x1057g

## PRODUCT DESCRIPTION

A heat treated mildly spiced cheese sauce made with a blend of cheddar cheese (5%) and milk.

Brand	Macphie Ltd
Manufacturer Product Code	10009572
Product Type	Food
Product Category	Sauces
Storage Type	Ambient
Erudus ID	ed42d6b932b8407cba06cc1d4e33c579
Specification Type	Legacy



Inner Component GTIN	5017506006820
Outer Case GTIN	05017506008480



## INGREDIENTS

**Ingredient Declaration**  
Reconstituted Skimmed **MILK**, Reconstituted Whole **MILK**, Water, Modified Starch, Cheese Powders (4.5%) (**MILK**), Cheddar Cheese (2.5%) (**MILK**), Extra Mature Cheddar Cheese (2.5%) (**MILK**), Vegetable Oil (Palm), Starch, Vegetable Stock Powder [Salt, Yeast Extract, Maltodextrin, Sugar, Dried Onion, Dried Carrot, Dried Tomato, Dried Lovage, Vegetable Oil (Sunflower)], Salt, Acidity Regulator (Trisodium citrate), Chilli Powder, Colours (Paprika extract, Beta-Carotene), Emulsifier (**SOYA** Lecithin).

## ALLERGENS

Product Contains:

Celery/Celeriac	No	Mustard	No
Cereals Containing Gluten	No	Nuts (Tree)	No
Barley	No	Almond nuts	No
Oats	No	Brazil nuts	No
Rye	No	Cashew nuts	No
Wheat (including Spelt and Khorasan)	No	Hazelnuts	No
Gluten content <20ppm	Yes	Macadamia (Queensland) nuts	No
Crustacea	No	Pecan nuts	No
Eggs	No	Pistachio nuts	No
Fish	No	Walnuts	No
Lupin	No	Peanuts	No
Milk	Yes	Sesame Seeds	No
Molluscs	No	Soybeans	Yes
		Sulphur Dioxide and Sulphites	No

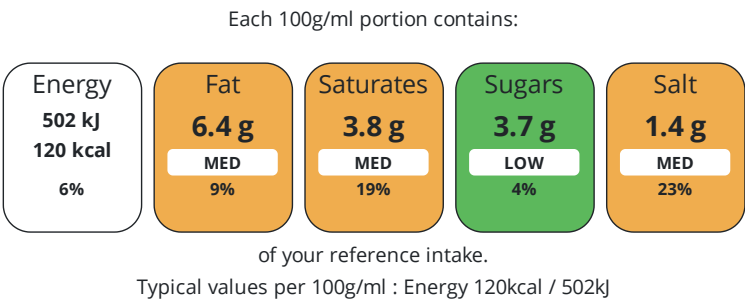
## Additional Allergen Information

Contains: Milk and Soya

DIET  
SUITABILITY

Suitable for Coeliacs	Yes	Halal Diet	No
Kosher Diet	No	Vegetarian Diet	Suitable for
Vegan Diet	No		

NUTRITIONAL  
INFORMATION



Nutrient	per 100g/ml	RI per 100g/ml
Energy (kJ)	502 kJ	6%
Energy (kcal)	120 kcal	6%
Fat	6.4 g	9%
of which Saturates	3.8 g	19%
Carbohydrate	10 g	4%
of which Sugars	3.7 g	4%
Fibre	0.1 g	
Protein	5.6 g	11%
Salt	1.4 g	23%

HANDLING &  
STORAGE  
INFORMATION

**Directions For Use**  
Please see technical information sheet. Available at Macphie.com.

**Storage Instructions**  
Unopened, store in a cool, dry place (<20°C). Opened, store in hygienic chill. Shelf life opened is 7 days.

ORIGIN  
CONTACT  
INFORMATION

Product Country of Origin	United Kingdom
Address	
	Macphie Ltd
	Glenbervie
	Stonehaven
	AB39 3YG
	Scotland
P: (Phone)	01569 740641

The information on the [Erudus System](#) has been supplied by the manufacturers of the products and, whilst the owners of the Erudus System take steps to ensure the information is regularly updated, they give no warranty and no guarantee that the information is accurate. Product information and ingredients may change, please always read product labels carefully in addition to using the information provided by Erudus.

We do not accept liability for any inaccuracies or incorrect information contained on this site.  
Please visit <http://www.erudus.com/terms-and-conditions> for full terms and conditions.